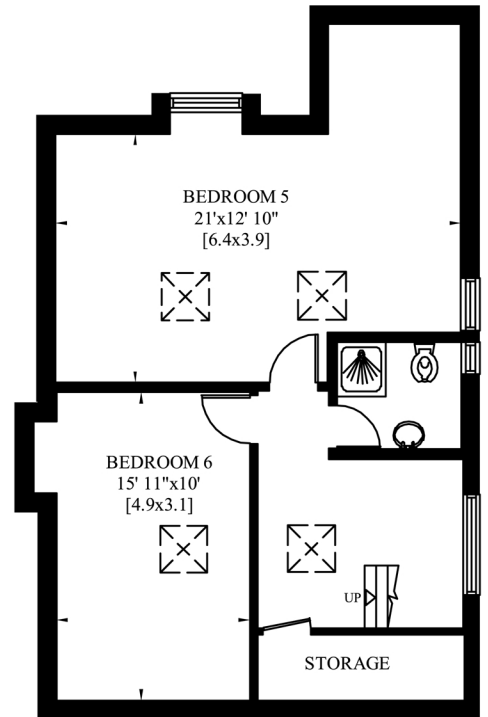


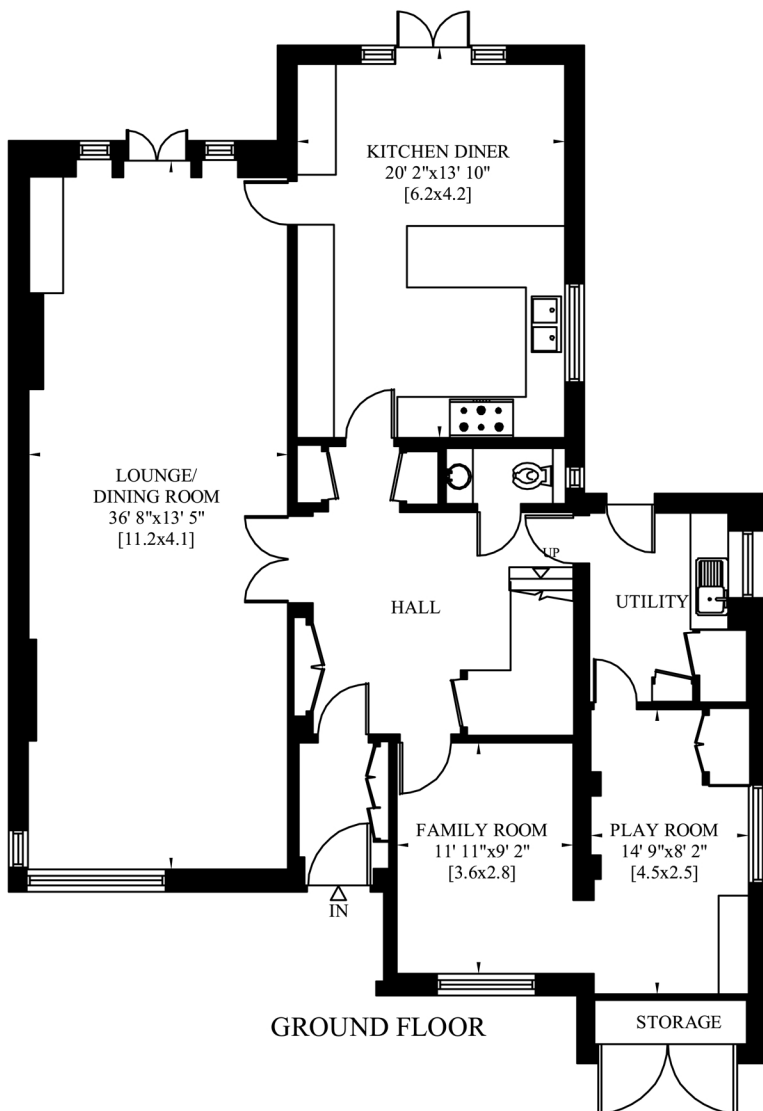
4 ROWAN WALK  
 HAMPSTEAD GARDEN  
 SUBURB  
 LONDON N2

Total  
 Gross Internal Area: 303 Sq. metres  
 3256 Sq. feet

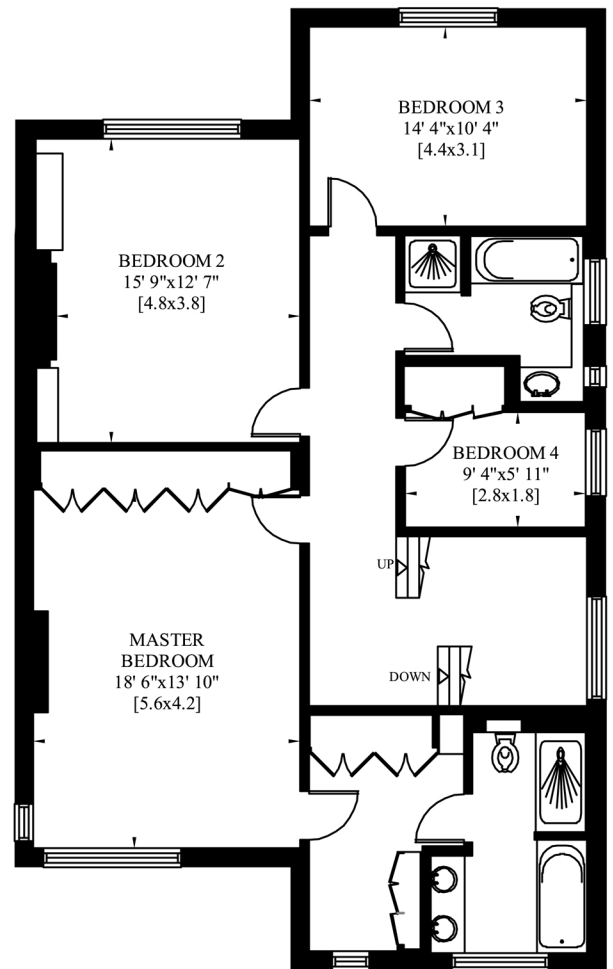
Storages  
 Gross Internal Area: 5 Sq. metres  
 54 Sq. feet



SECOND FLOOR

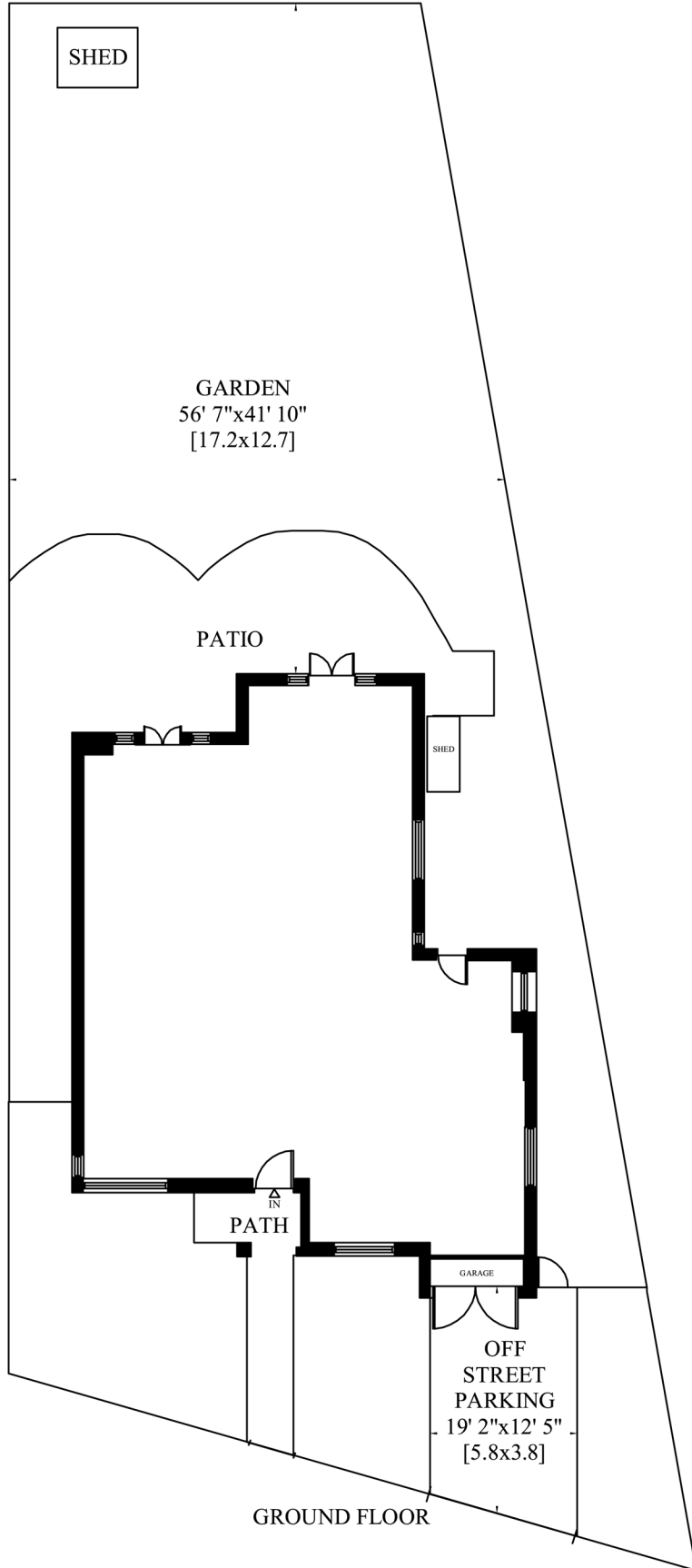


GROUND FLOOR



FIRST FLOOR

4 ROWAN WALK  
HAMPSTEAD GARDEN  
SUBURB  
LONDON N2  
SITEPLAN



GROUND FLOOR