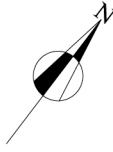


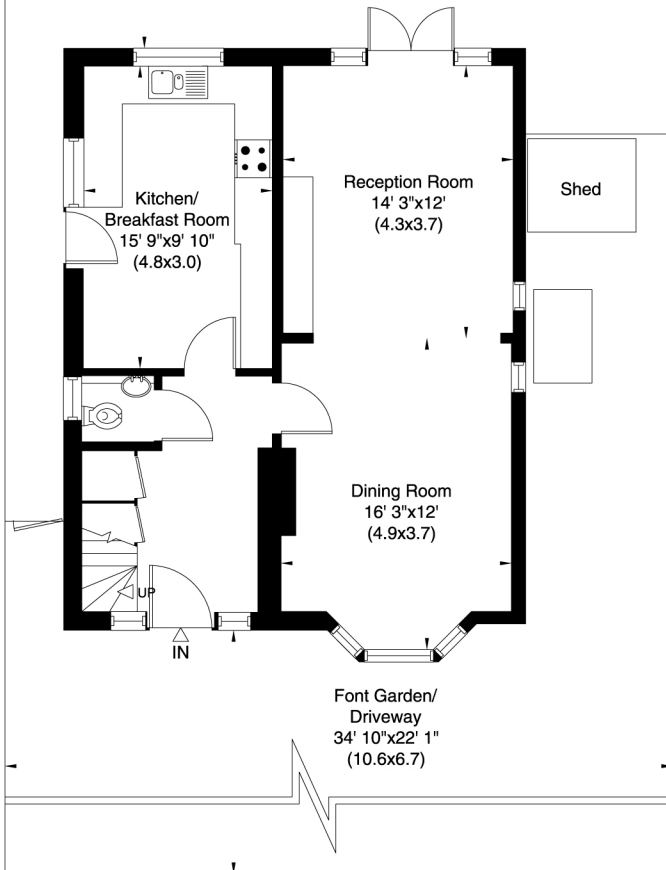
77 NORTHWAY LONDON NW11

Gross Internal Area: 147 Sq. metres
1582 Sq. feet



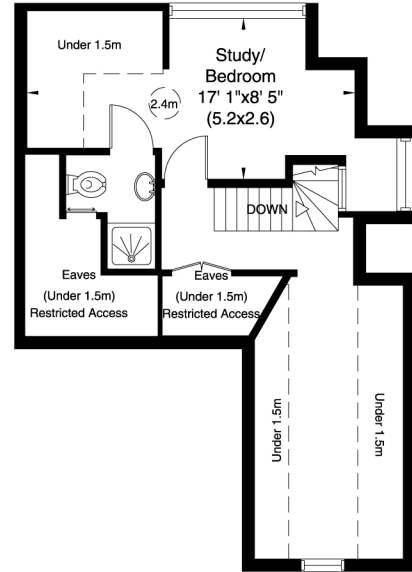
Garden
63' 7"x34' 10"
(19.4x10.6)

Patio

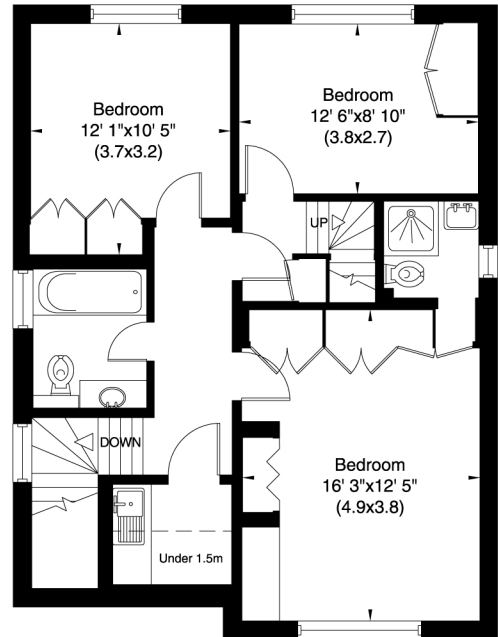


Ground Floor

Not to scale, for guidance only and must not be relied upon as a statement of fact. All measurements and areas are approximate only (and have been prepared in accordance with the current edition of the RICS Code of Measuring Practice).



Second Floor



First Floor