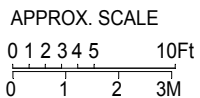
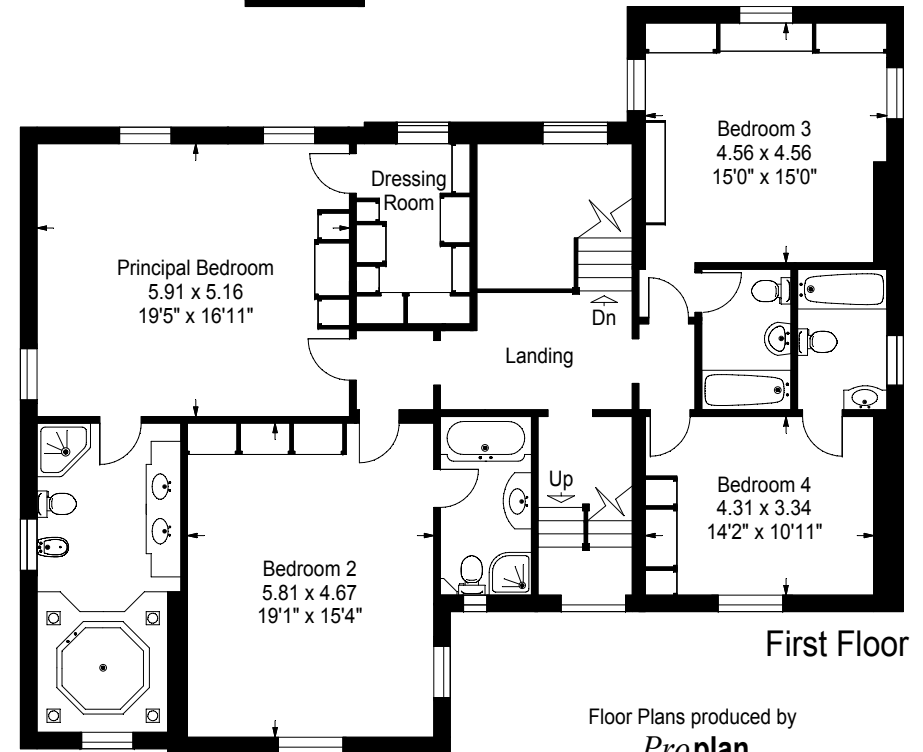
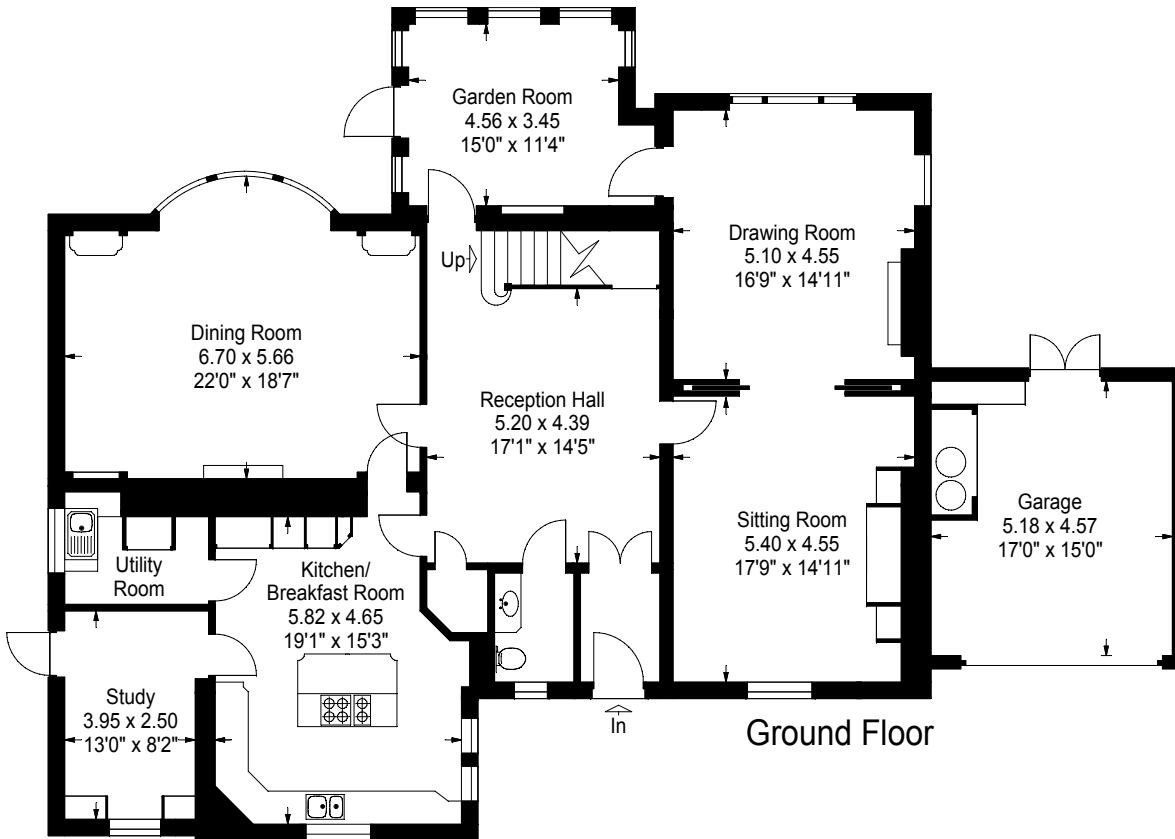
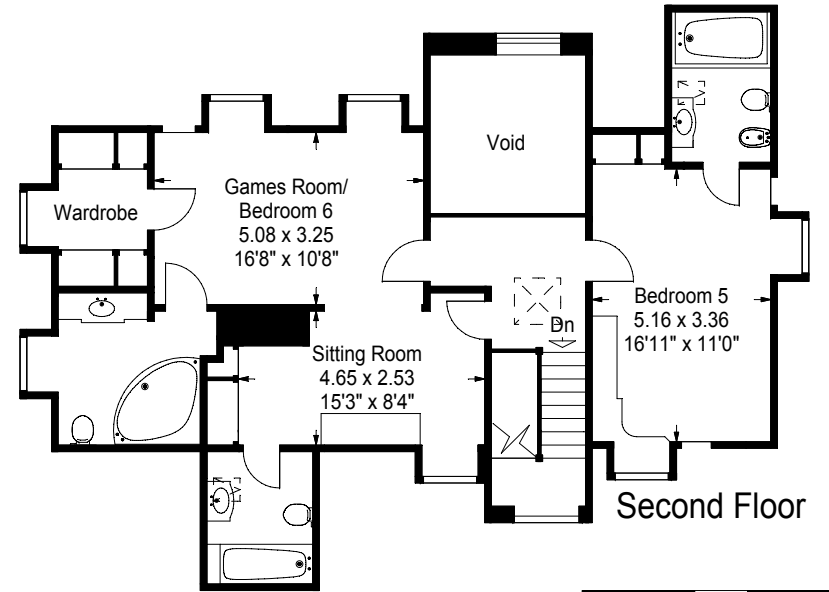
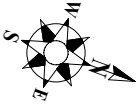


Winnington Road, London N2

Approximate Gross Internal Floor Area:
 House - 430 sq.mts./ 4629 sq.ft.
 Garage - 24 sq.mts./ 258 sq.ft.
 Total - 454 sq.mts./ 4887 sq.ft.



Floor Plans produced by

Proplan

01491 842925

All measurements and figures are taken in accordance with RICS guidelines. This plan is for guidance only and must not be relied upon as a statement of fact.