

Hermitage Lane, London, NW2

Approximate Gross Internal Floor Area = 266.2 sq m / 2866 sq ft (Including Restricted Height Area)
Approximate Gross Internal Floor Area = 250.0 sq m / 2691 sq ft (Excluding Restricted Height Area)

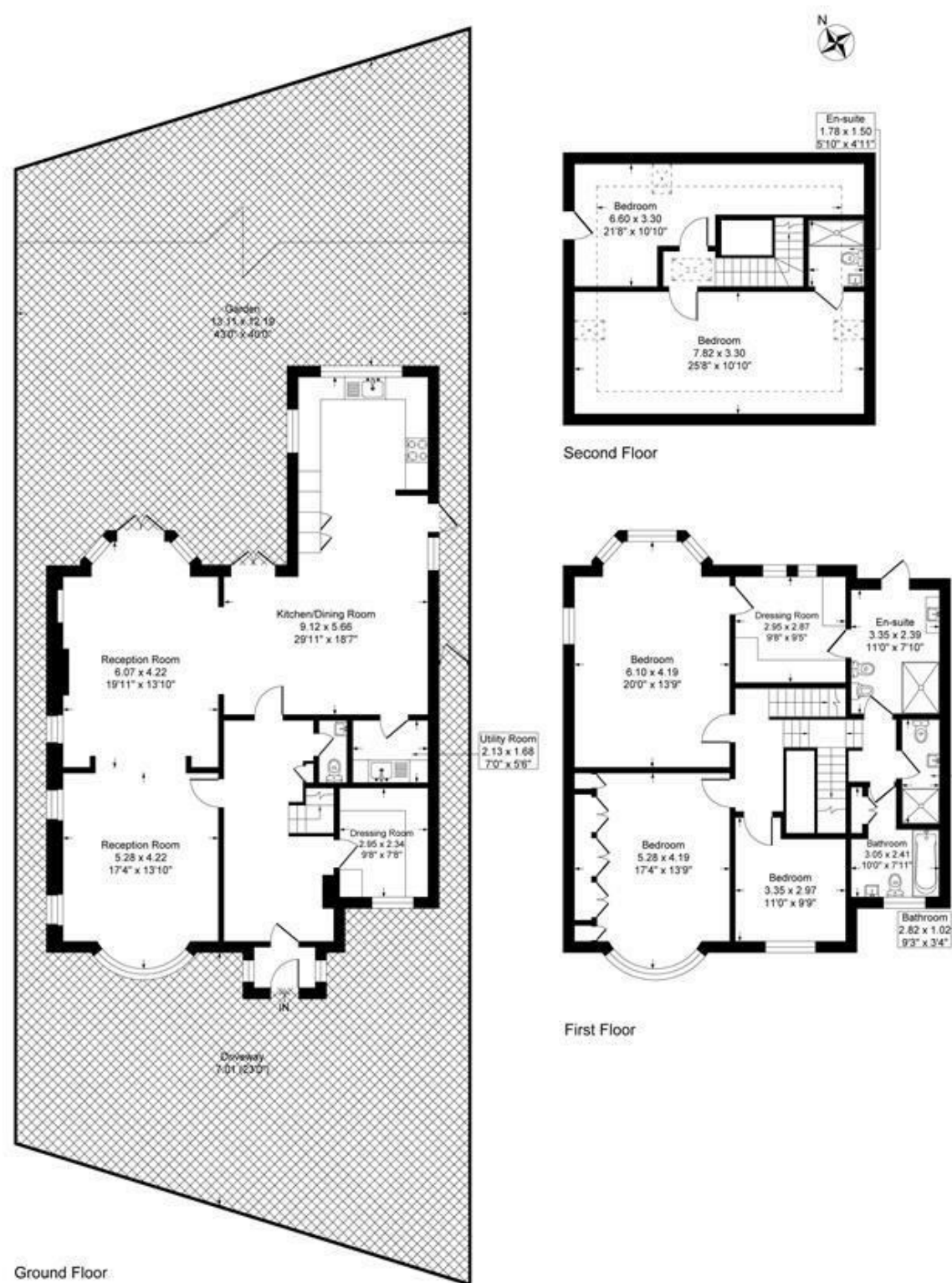


Illustration for identification purposes only, measurements are approximate, not to scale.



Hermitage Lane, NW2

Located on Hermitage Lane NW2, this stunning detached house boasts 2866 sq ft of recently refurbished living space. The property features a large driveway, providing ample parking. Inside, you'll find a spacious through lounge and a big kitchen family room, perfect for entertaining. The home offers 5 generous bedrooms and 4 modern bathrooms.

Available September 2024

Long Let
Deposit 6 Weeks Rent
Barnet Council Band H

£2,538 Per Week



Energy Efficiency Rating		Current	Potential
Very energy efficient - lower running costs			
(92 plus) A			
(81-91) B			
(69-80) C			
(55-68) D			
(39-54) E			
(21-38) F			
(1-20) G			
Not energy efficient - higher running costs			
England & Wales		EU Directive 2002/91/EC	

Environmental Impact (CO ₂) Rating		Current	Potential
Very environmentally friendly - lower CO ₂ emissions			
(92 plus) A			
(81-91) B			
(69-80) C			
(55-68) D			
(39-54) E			
(21-38) F			
(1-20) G			
Not environmentally friendly - higher CO ₂ emissions			
England & Wales		EU Directive 2002/91/EC	

