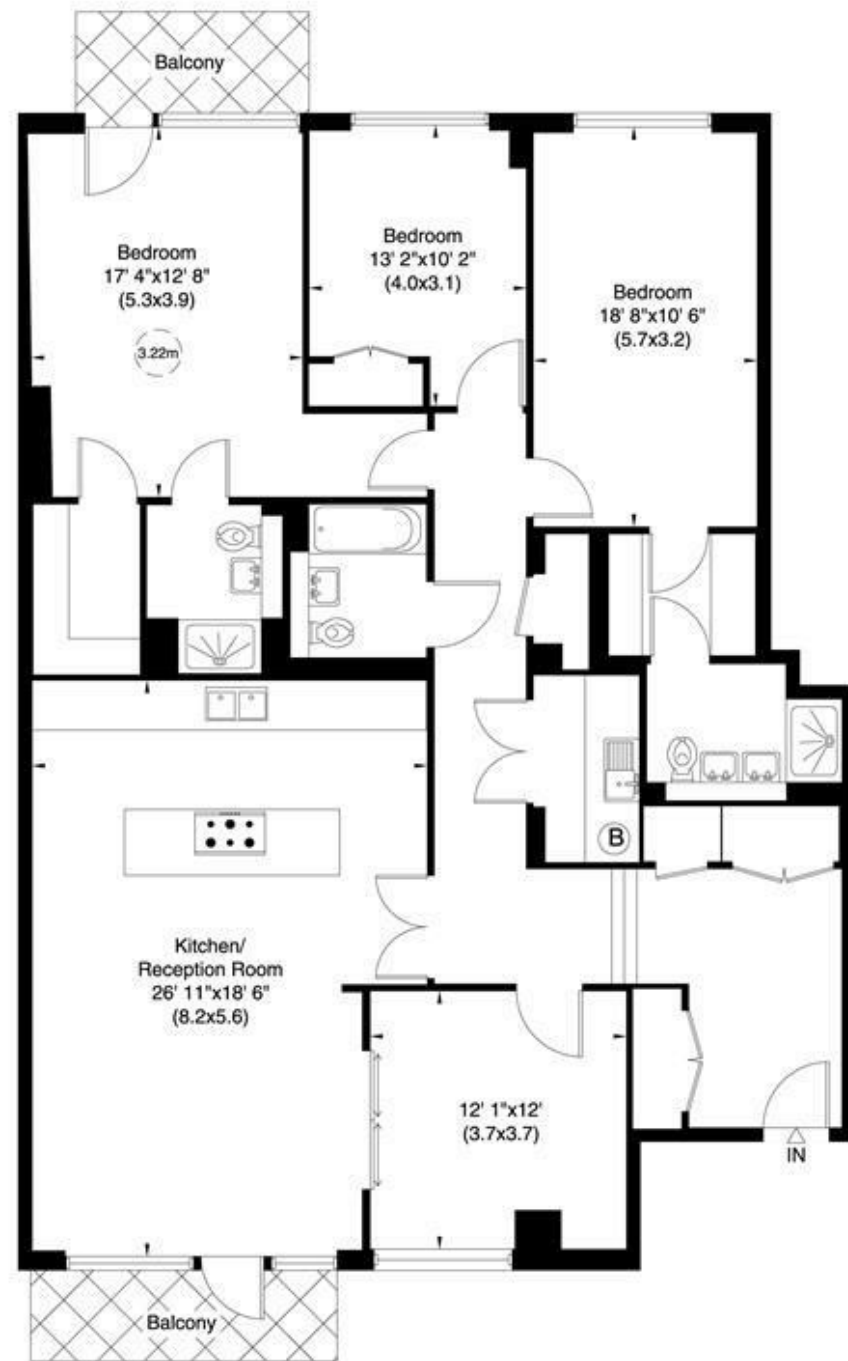


Lexington Place, 765 Finchley Road, NW11

Gross internal area (approx.)
1831 Sq ft (170 Sq m)

For identification only, Not to Scale

Floor Plan by **capital group** 020 8671 7722



Ground Floor

Not to scale, for guidance only and must not be relied upon as a statement of fact. All measurements and areas are approximate only (and have been prepared in accordance with the current edition of the RICS Code of Measuring Practice).



Finchley Road, Golders Green NW11

Sole Agents *PROPERTY MANAGED BY GLENTREE ESTATES*

One of the largest and most spacious apartments available for rent in the prestigious newly built Lexington in Golders Green.

Luxury apartment in the recently-built, prestigious Lexington development, which is situated on the corner of Finchley Road and Llanvanor Road within 5 minutes of the amenities of Golders Green and Temple Fortune and in walking distance of the wide-open space of Hampstead Heath.

This 2-bedroom apartment to rent on Finchley Road offers a 12-hour concierge, a private gym for all residents and a designated underground parking space for one car. This 1870-square-foot ground-floor apartment is the largest apartment in the development and provides a spacious reception room, fully-fitted top of the range kitchen, with a further dining room.

Master Bedroom with floor-to-ceiling windows and balcony (overlooking landscaped communal courtyard), full dressing room and shower room en suite (with heated wall), 2nd large double bedroom with en-suite shower room and dressing room, and one further double bedroom. This property is currently available for long-term rental.

Available 15 October 2024

Long Let

Council Tax Band H

£1,750 Per Week



RENTALS 020 8209 1144
SALES 020 8458 7311
FAX 020 8209 0307

E rentals@glentree.com
E sales@glentree.com
W www.glentree.com

Glentree Estates Ltd
698 Finchley Road
London NW11 7NE

