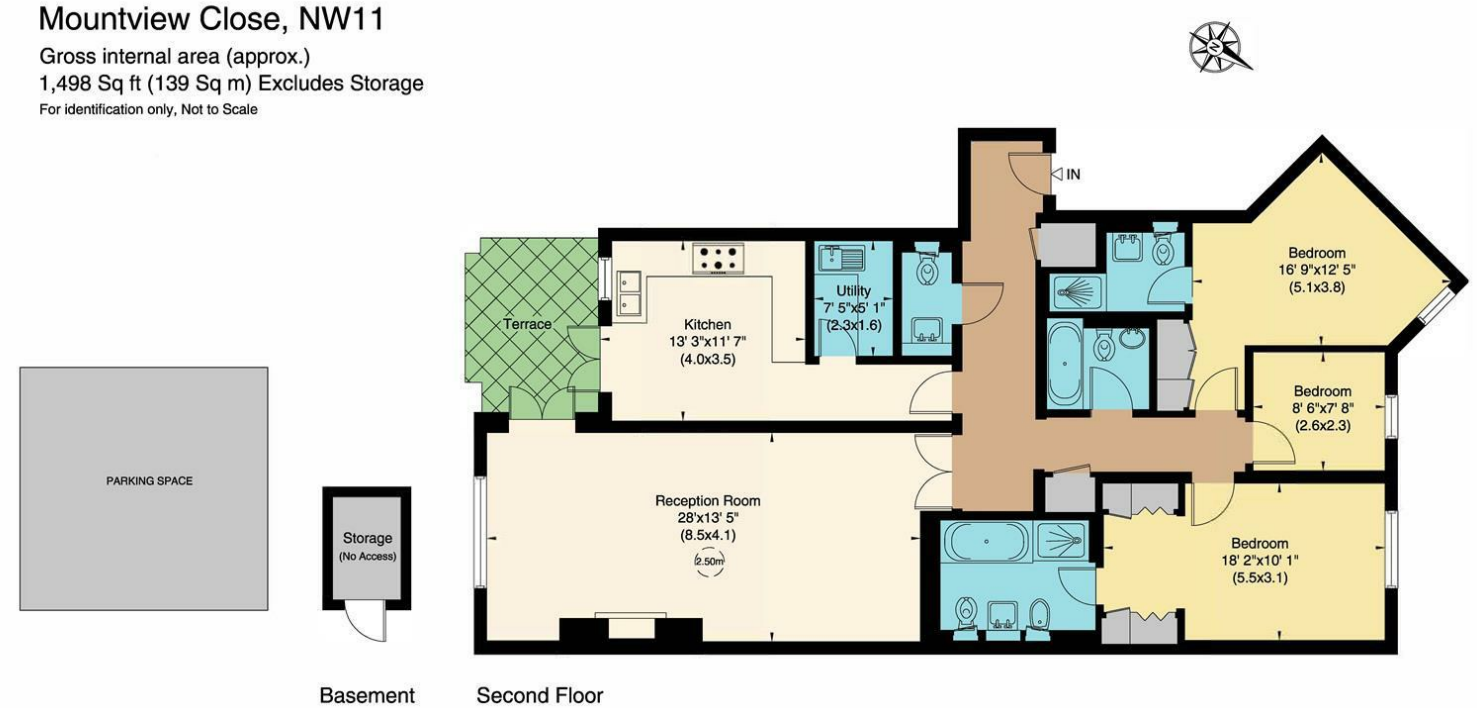


**Mountview Close, NW11**  
Gross internal area (approx.)  
1,498 Sq ft (139 Sq m) Excludes Storage  
For identification only, Not to Scale



Not to scale, for guidance only and must not be relied upon as a statement of fact. All measurements and areas are approximate only (and have been prepared in accordance with the current edition of the RICS Code of Measuring Practice).



### Mountview Close, NW11

A luxury apartment in this highly sought-after block with 24hr Concierge, beautifully manicured communal gardens and resident's gym. Apartments in Mountview Close, are very rare and are as common as 'hens' teeth'. The building is situated on the corner of North End Road and Hampstead Way overlooking Golders Hill Park.

The Apartment is located on the 2nd floor, facing the quieter Hampstead Way aspect, but still benefitting from the South West afternoon light, into the rear bedrooms.

3 Bedrooms (2 double + 1 single) comprising; Master Bathroom with separate dressing area and Bathroom ensuite; Bedroom 2 with dressing area and Shower room ensuite; Bedroom 3 with separate Bathroom; Large double Reception Room with access to spacious covered Terrace; Kitchen/Breakfast room, with access to Terrace; separate Utility Room (with separate Miele washer/dryer/sink); spacious Hall; Cloakroom; Storage Room; 2 underground car spaces.

3 BEDROOMS: 3 BATHROOMS (2 EN SUITES): LOUNGE/DINING ROOM: FULLY FITTED KITCHEN: GUEST CLOAKROOM: BALCONY ACCESSED FROM RECEPTION AND KITCHEN: UTILITY ROOM; UNDERGROUND PARKING: COMMUNAL GYM

**SOLE AGENT**

**£2,250,000**



