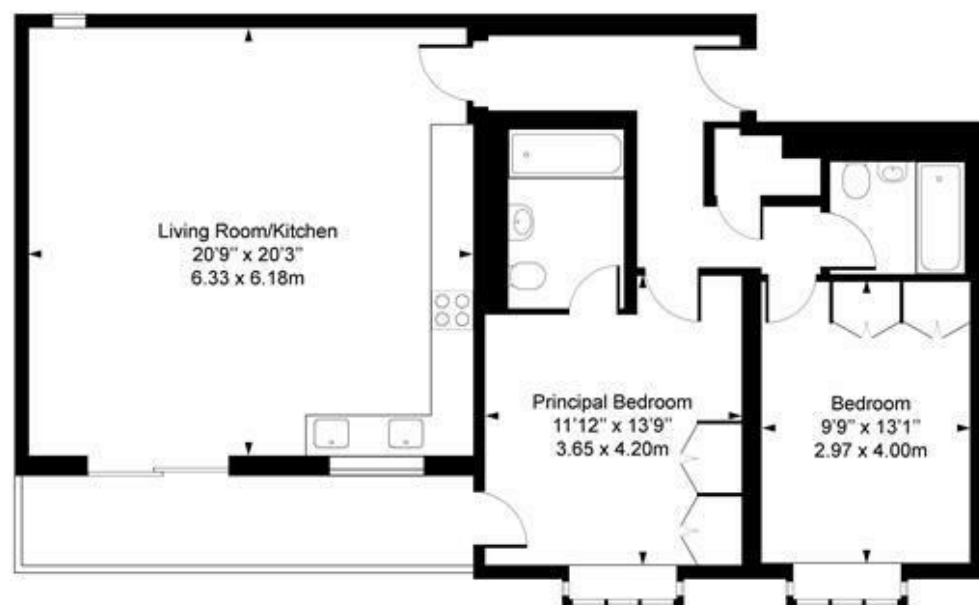


Beechcroft Avenue, NW11

Approx. Gross Internal Area 926.12 sq ft / 86.04 sq m



Second Floor

For Illustration Purposes Only - Not To Scale

This floor plan should be used as a general outline for guidance only and does not constitute in whole or in part an offer or contract. Any intending purchaser or lessee should satisfy themselves by inspection, search, enquiries and full survey as to the correctness of each statement. Any areas, measurements or distances quoted are approximate and should not be used to value a property or be the basis of any sale or let.



Beechcroft Avenue, Golders Green NW11

Located just minutes from Golders Green Station both Golders Green & Temple Fortune High streets and plenty of local schools and places of worship, Oakview Lodge offers a selection of stunning brand newly fully refurbished apartments to rent.

This 1050 sq ft top floor apartment offers 2 double bedrooms, 2 bathrooms (both ensuite), a very large open plan living room and Kosher kitchen along with balcony and roof terrace

This apartment comes with an allocated one space in the secure car park and access to the communal gardens.

Available NOW
Long Let
Barnet Council Band E
Deposit 5 weeks Rent
EPC rating B

Furnished options available, to be discussed

£715 Per Week



| Energy Efficiency Rating | | Current | Potential |
|---|--|-------------------------|-----------|
| Very energy efficient - lower running costs | | | |
| (92 plus) A | | | |
| (81-91) B | | | |
| (69-80) C | | | |
| (55-68) D | | | |
| (39-54) E | | | |
| (21-38) F | | | |
| (1-20) G | | | |
| Not energy efficient - higher running costs | | | |
| England & Wales | | EU Directive 2002/91/EC | |

| Environmental Impact (CO ₂) Rating | | Current | Potential |
|---|--|-------------------------|-----------|
| Very environmentally friendly - lower CO ₂ emissions | | | |
| (92 plus) A | | | |
| (81-91) B | | | |
| (69-80) C | | | |
| (55-68) D | | | |
| (39-54) E | | | |
| (21-38) F | | | |
| (1-20) G | | | |
| Not environmentally friendly - higher CO ₂ emissions | | | |
| England & Wales | | EU Directive 2002/91/EC | |

