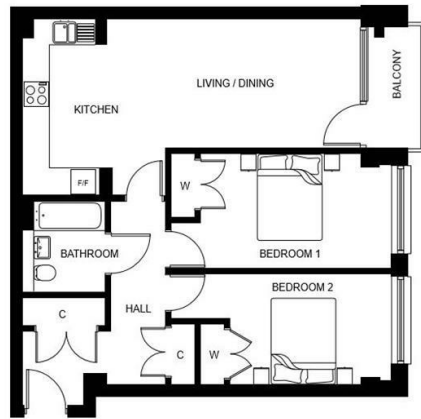


**2 BEDROOM APARTMENT | PLOT 49**

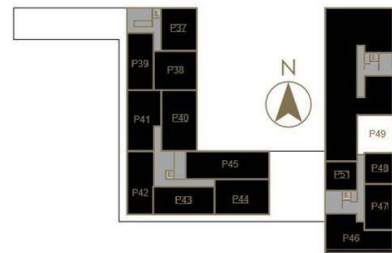


**SECOND FLOOR**

TOTAL AREA: 72.0m<sup>2</sup> | 774.9' sq ft

**DIMENSIONS**

Kitchen / Living / Dining	7.91m x 4.14m   25'11" x 13'7"	Bedroom 2	5.20m x 2.60m   17'1" x 8'6"
Bedroom 1	5.20m x 2.70m   17'1" x 8'10"		



Key:  
C: Cupboard  
W: Wardrobe  
F/F: Fridge Freezer



**Finchley Road, NW11**

| 2 Bedroom Apartment | 774 Sq Ft | Hotel Style Concierge | Secure Underground Parking | Resident Gym | Finished To A Very High Standard | Available Now |

Luxury second floor apartment in the recently built Lexington development, which is situated on the corner of Finchley Road and Llanvanor Road within 5 minutes of the amenities of Golders Green and within walking distance of Hampstead Heath.

The apartment is a desirable unit within this highly prestigious development and offers open-plan kitchen and large reception room leading onto its own private balcony, 2 x double bedrooms, spacious bathroom and a parking space for one car in the underground car park

Other facilities include 12 hour concierge, communal gardens and a private gym for residents.

Energy Efficiency Rating B  
Long Let  
Barnet Council Band F  
Deposit 5 Weeks

**£595 Per Week**



