

**Carla House, Rundell Crescent, Hendon, NW4**

Approximate Gross Internal Area  
1603 sq ft - 149 sq m

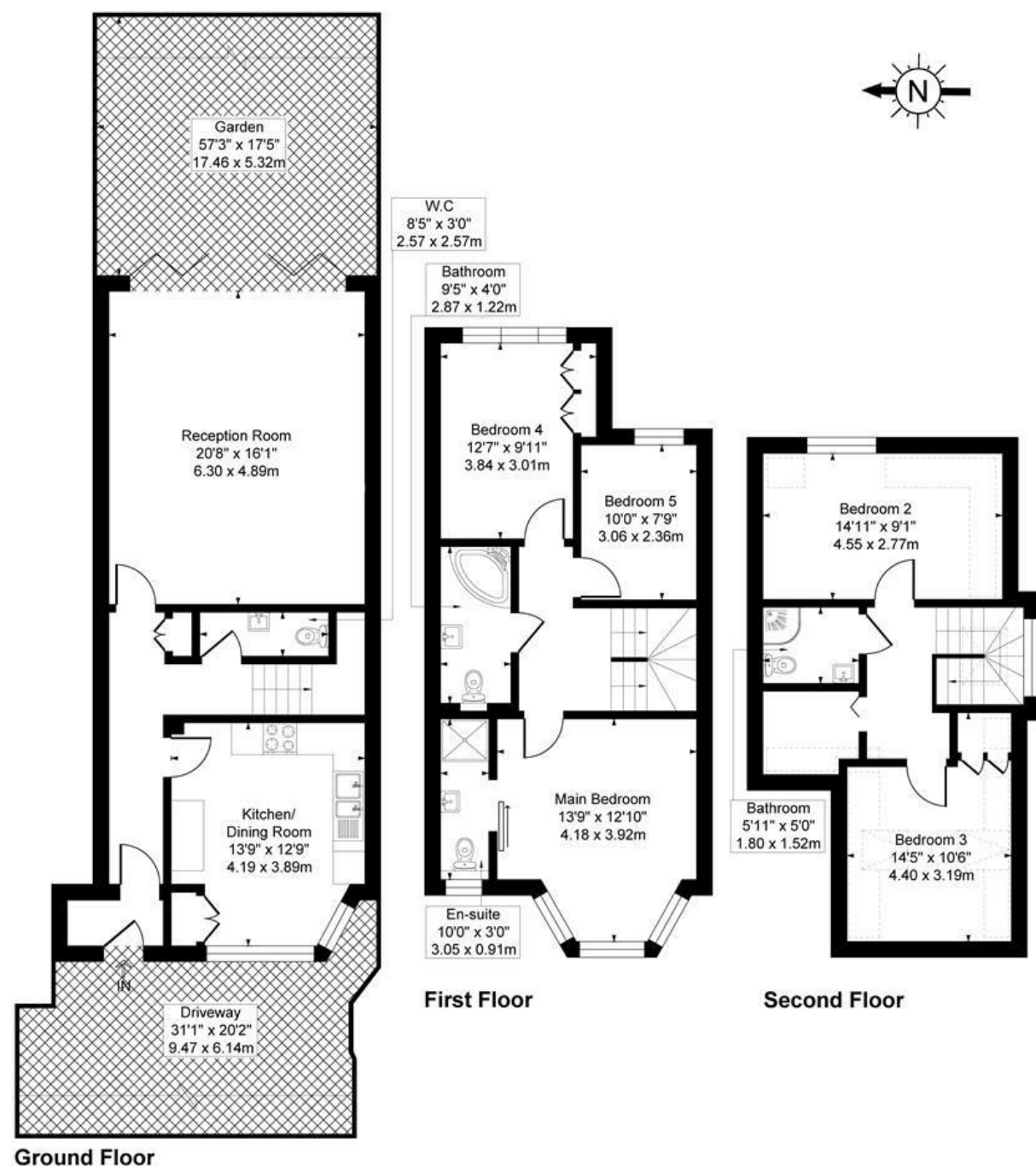


Illustration for identification purposes only, not in scale



**Rundell Crescent, NW4**

Stunning, newly refurbished 5 bedroom house available to rent in close proximity to Hendon Central and Hendon Overground Station.

This spacious 5 bedroom house is finished to a very high standard and offers ample living space down stairs and 5 bedrooms and 3 bathrooms (one en-suite).

Available NOW  
Long Let  
Unfurnished  
EPC Rating B  
Barnet Council Band F

**£920 Per Week**



RENTALS 020 8209 1144 E rentals@glentree.com  
SALES 020 8458 7311 E sales@glentree.com  
FAX 020 8209 0307 W www.glentree.com

Glentree Estates Ltd  
698 Finchley Road  
London NW11 7NE

