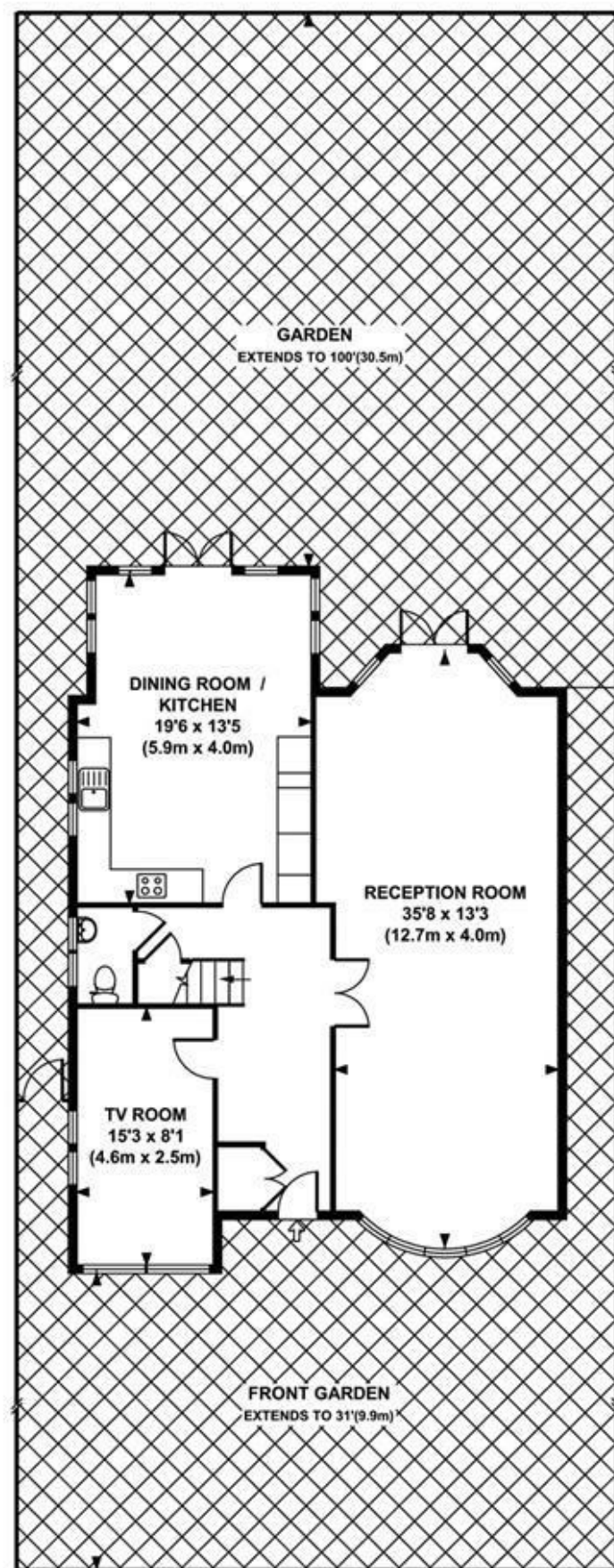


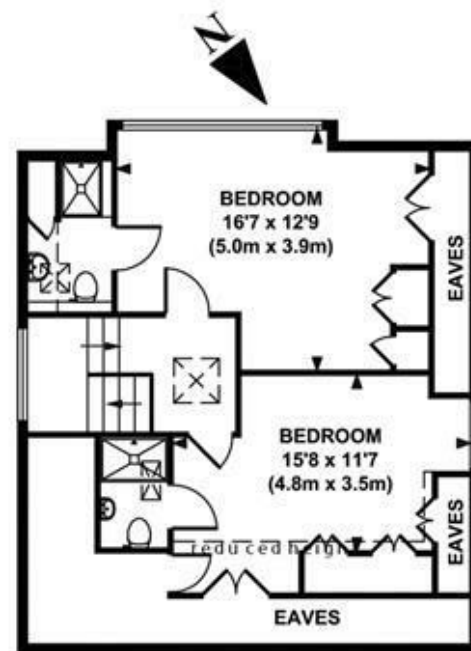


glentree  
RENTALS

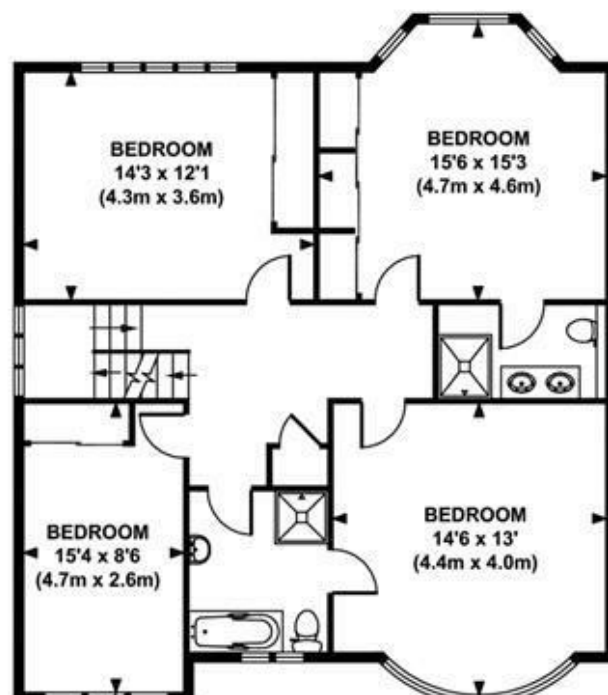
020 8209 1144  
www.glentree.com



GROUND FLOOR  
GROSS INTERNAL  
FLOOR AREA 1027 SQ FT



SECOND FLOOR  
GROSS INTERNAL  
FLOOR AREA 624 SQ FT



FIRST FLOOR  
GROSS INTERNAL  
FLOOR AREA 1005 SQ FT

APPROX. GROSS INTERNAL FLOOR AREA 2656 SQ FT / 246 SQ M  
(Includes Reduced Height and Eaves Storage Areas)

Copyright Glentree Properties 2022

This floorplan is for illustration purposes and may not truly reflect design or dimensions and should not be used for valuation or condition purposes.



## Kingsley Way, N2

Superb detached family home located in the heart of Hampstead Garden Suburb and arranged over three floors.

The house offers fantastic entertaining space including a large through lounge/dining room, TV room, fully-fitted kitchen with a dining area., 6 double bedrooms, 4 ensuite shower rooms, family bathroom, guest cloakroom, beautiful garden and off-street parking for 2/3 cars.

Available unfurnished.  
Available No

Barnet Council Band H  
Energy Efficiency Rating E46  
Long Let

**£2,420 Per Week**



RENTALS 020 8209 1144 E rentals@glentree.com  
SALES 020 8458 7311 E sales@glentree.com  
FAX 020 8209 0307 W www.glentree.com

Glentree Estates Ltd  
698 Finchley Road  
London NW11 7NE

