



glentree

NEW HOMES

020 8731 9500

www.glentreenewhomes.com



, Mountview Close, NW11

A beautifully presented, generously sized 3 bedroom, 3 bathroom, third floor apartment of 1704 sq ft, situated in this luxury & highly desirable block with 24hr Concierge, gated entrance, secure underground parking, beautifully manicured communal gardens and resident's gym.

Apartments in Mountview Close, NW11, are very rare and exceptionally sought after. The building is situated on the corner of North End Road and Hampstead Way overlooking Golders Hill Park.

This particular apartment is the most desirable layout within the development and comprises of 3 Bedrooms all with en-suite bathrooms, dressing room to master bedroom, large double reception room with access to spacious terrace; kitchen/breakfast room, with access to balcony; separate utility room, guest cloakroom; storage room in basement & 2 underground car spaces.

Photographs of the internal rooms will be available soon. Early viewing is highly recommended.

3 BEDROOMS ALL WITH EN-SUITE BATHROOM; DRESSING ROOM TO THE MASTER BEDROOM; LARGE DOUBLE RECEPTION ROOM WITH ACCESS TO SPACIOUS COVERED TERRACE; SEPARATE UTILITY ROOM; GUEST CLOAKROOM; STORAGE ROOM IN THE BASEMENT; 2 UNDERGROUND PARKING SPACE; 24 HOUR CONCIERGE; RESIDENT'S GYM; BEAUTIFULLY LANDSCAPED COMMUNAL GARDENS

SOLE AGENT

£3,100,000



NEW HOMES 020 8731 9500 E newhomes@glentree.com
FAX 020 8209 0307 W www.glentree.com

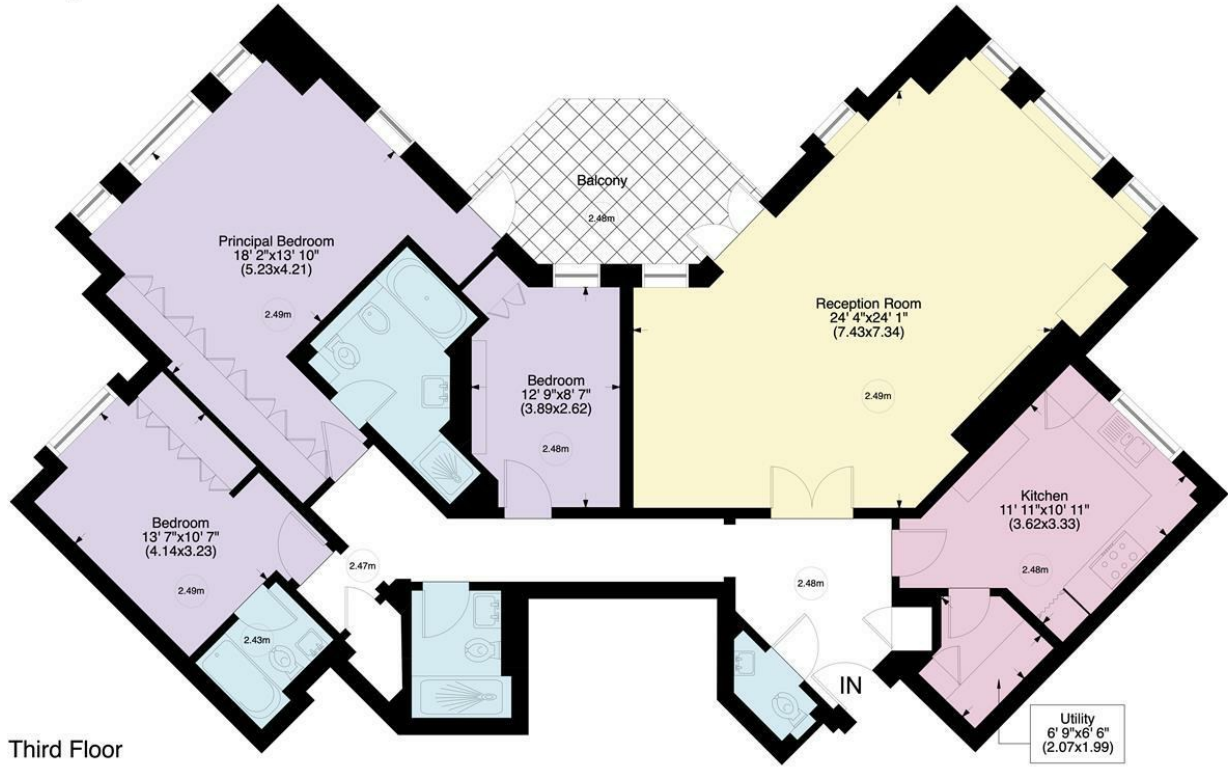
Glentree Estates Ltd
698 Finchley Road
London NW11 7NE

Mountview Close NW11

Gross internal area (approx.)

158 Sq m (1704 Sq ft)

For identification only, Not to Scale



www.virtualtours.london

Not to scale, for guidance only and must not be relied upon as a statement of fact. All measurements and areas are approximate only (and have been prepared in accordance with the current edition of the RICS Code of Measuring Practice).

