



Litchfield Way, NW11

Positioned In this desirable turning on the south side of Hampstead Garden suburb is this 5 bedroom, 3 bathroom semi-detached family home.

The property is offered in very good condition and benefits from well appointed accommodation arranged over 3 floors. The ground floor comprises a lovely entrance hallway with double doors leading into a beautifully presented lounge dining room with French doors going out onto the rear garden and large kitchen diner family room with a separate utility room.

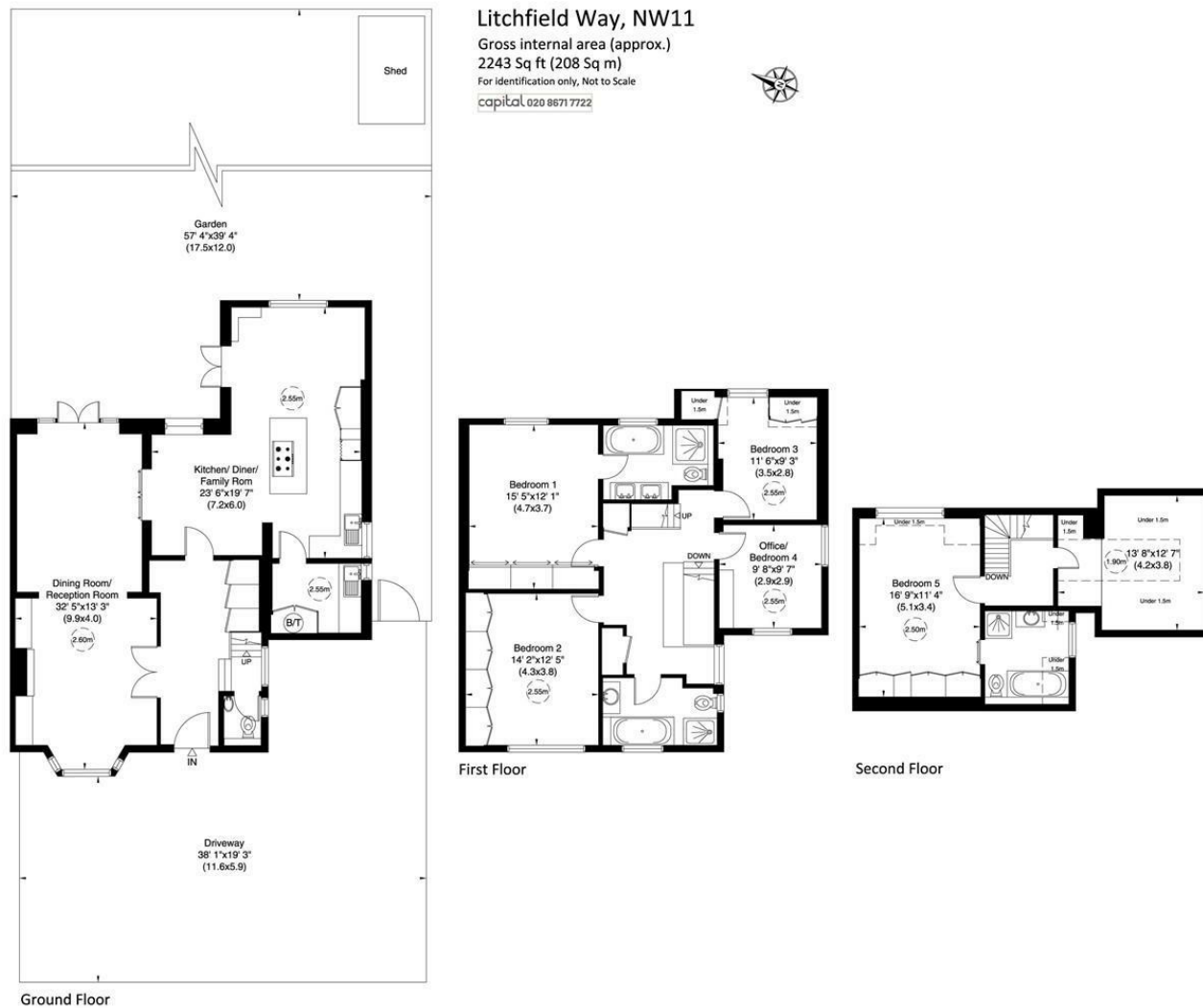
The first floor offers 4 bedrooms with the principal room being en suite and a separate family bathroom. There is a 5th bedroom located on the top floor which also boasts an ensuite bathroom.

The amenities of The Market Place, Temple Fortune and Golders Green are all within a short distance and the Heath Extension is less than a 10 minute walk.

RECEPTION ROOM/DINING ROOM: KITCHEN/DINER/FAMILY ROOM: PRINCIPAL BEDROOM WITH EN SUITE: 4 FUTHER BEDROOM (1 WITH EN SUITE): FAMILY BATHROOM: REAR GARDEN: OFF-STREET PARKING

SOLE AGENTS

£2,300,000



Not to scale, for guidance only and must not be relied upon as a statement of fact. All measurements and areas are approximate only (and have been prepared in accordance with the current edition of the RICS Code of Measuring Practice).

