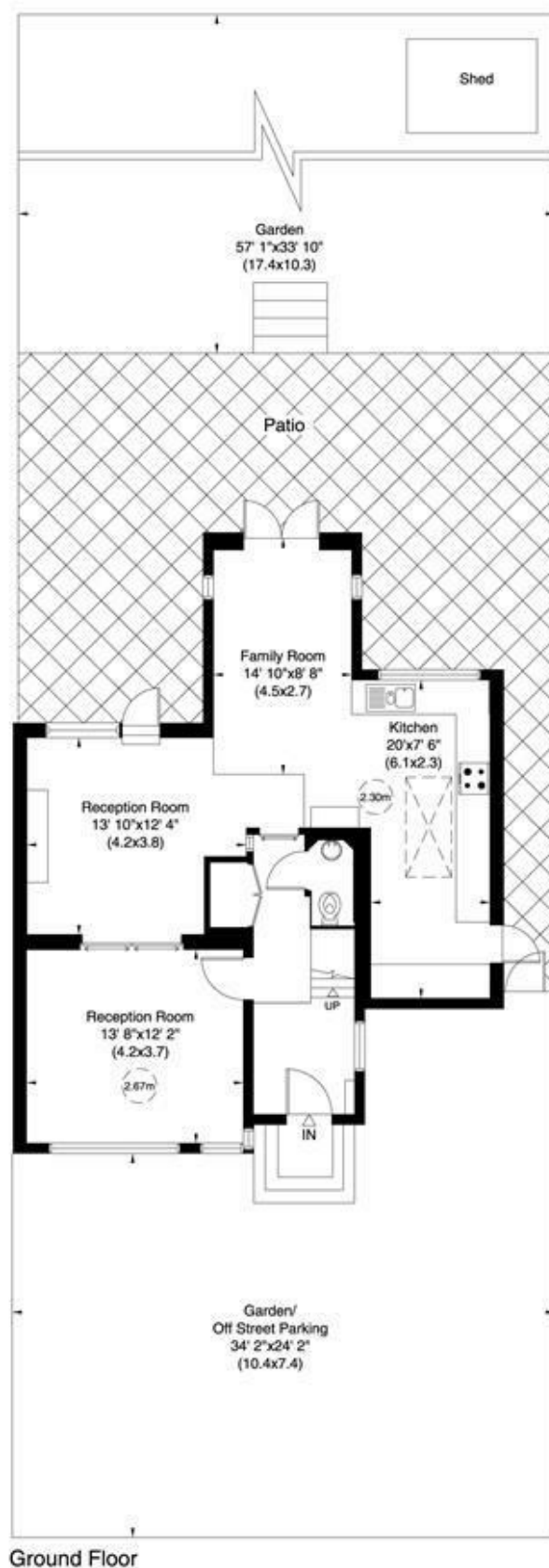




glentree  
RENTALS

020 8209 1144  
www.glentree.com



## Hutchings Walk, NW11

Gross internal area (approx.)  
1565 Sq ft (145 Sq m)

For identification only, Not to Scale

Floor Plan by **capital group** 020 8671 7722



First Floor



Second Floor



## Hutchings Walk, NW11

A stunning recently refurbished 4 bedroom semi-detached house on the north side of Hampstead Garden Suburb. This lovely house is spread onto 3 floors and has been finished to a very high standard (including underfloor heating and integrated sound system) and has off street parking for one car.

Upon entering the house you are met by a spacious double reception room, additionally there is a modern, fully fitted kitchen with integrated appliances and large eating area.

The first floor comprises of a large master bedroom with en suite bathroom, 2 further bedrooms and fully tiled family bathroom. The top floor offers A double bedroom and bathroom.

This house is in the catchment area for some excellent local schools and is available Feb 2025

Long Let

**£1,269 Per Week**

Not to scale, for guidance only and must not be relied upon as a statement of fact. All measurements and areas are approximate only (and have been prepared in accordance with the current edition of the RICS Code of Measuring Practice).



RENTALS 020 8209 1144 E rentals@glentree.com  
SALES 020 8458 7311 E sales@glentree.com  
FAX 020 8209 0307 W www.glentree.com

Glentree Estates Ltd  
698 Finchley Road  
London NW11 7NE

