

Rotherwick Road NW11

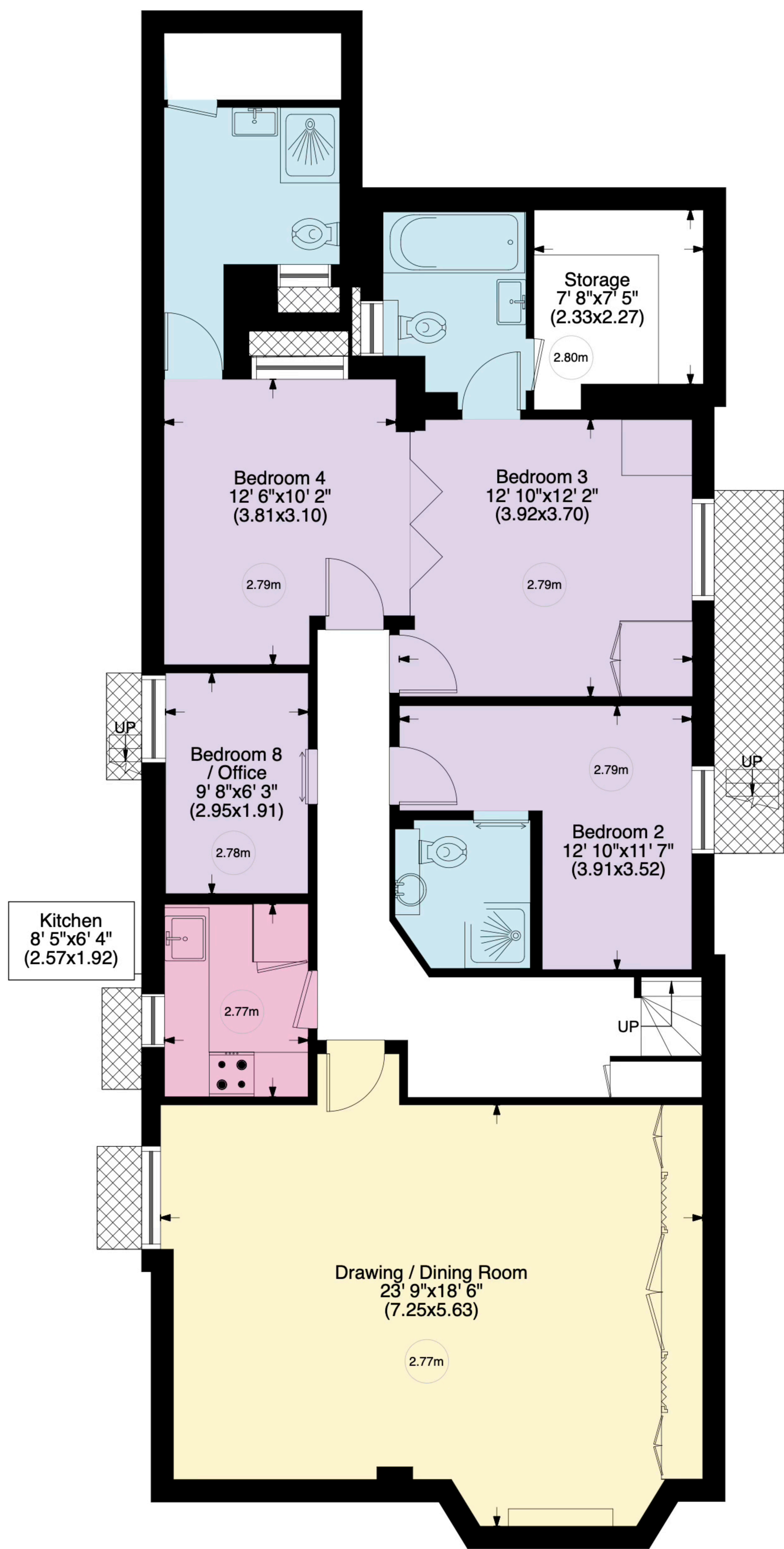


Gross internal area (approx.)

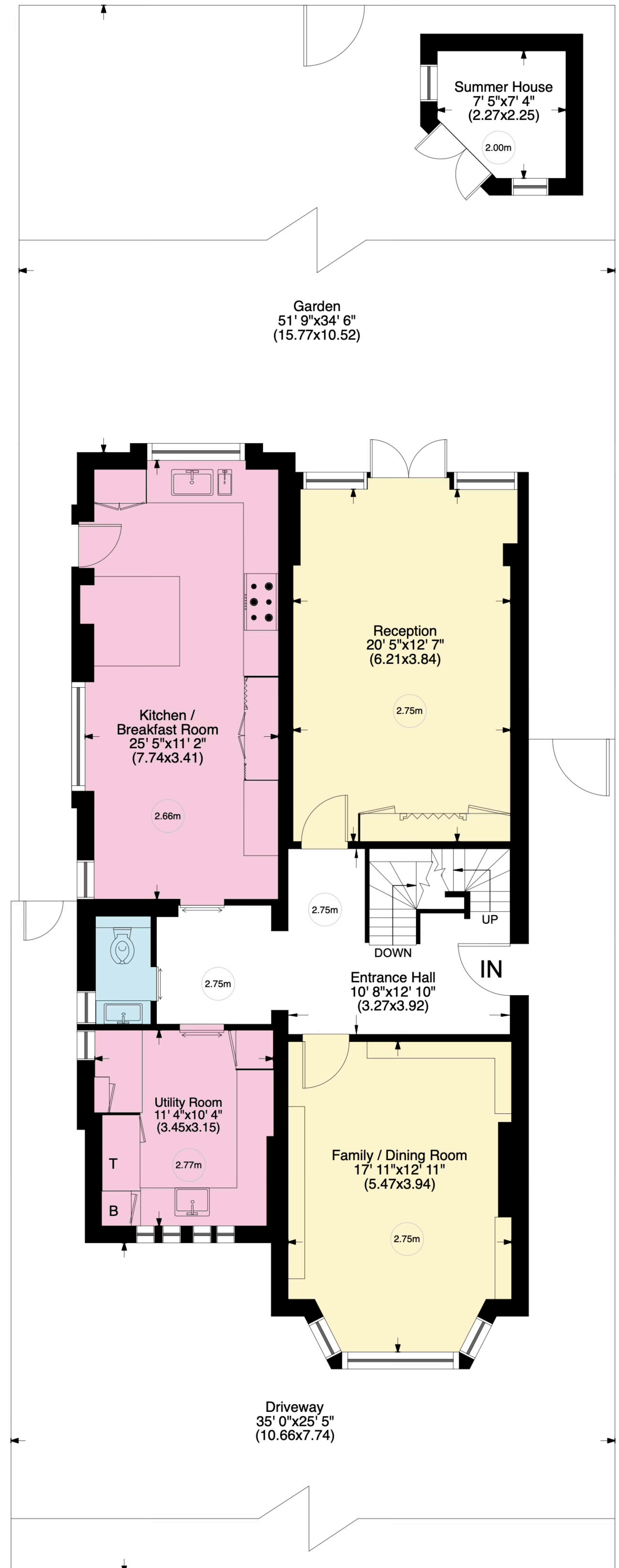
394 Sq m (4243 Sq ft) Including Loft & under 1.5m

329 Sq m (3539 Sq ft) Excluding Loft & under 1.5m

For identification only, Not to Scale



Basement



Ground Floor

www.WilliamSalisbury.Photography

Not to Scale, for guidance only and must not be relied upon as a statement to fact. All measurements areas are approximate only (and have been prepared in accordance with the current edition of the RICS Code of Measuring Practice).

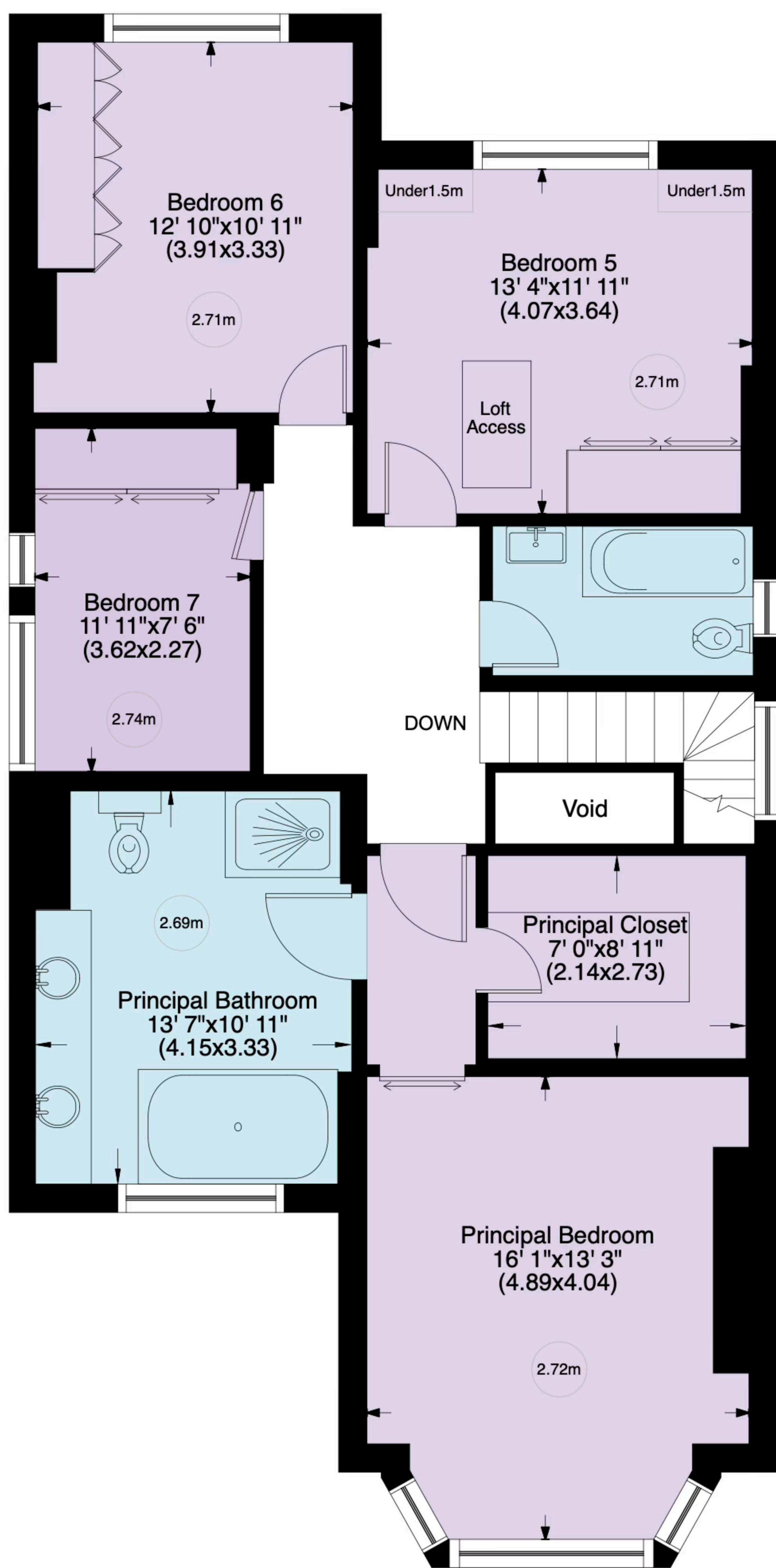
Rotherwick Road NW11

Gross internal area (approx.)

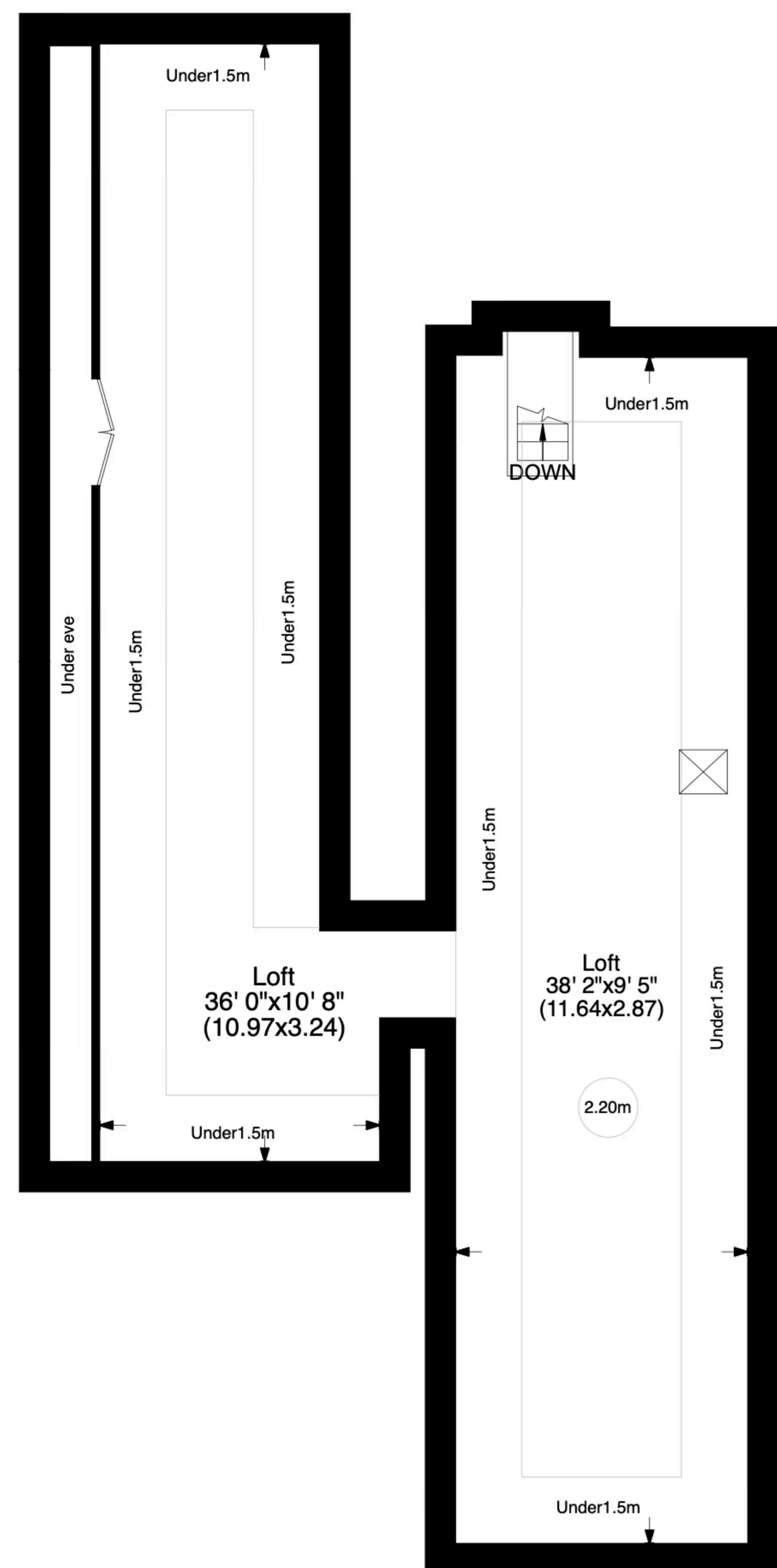
394 Sq m (4243 Sq ft) Including Loft & under 1.5m

329 Sq m (3539 Sq ft) Excluding Loft & under 1.5m

For identification only, Not to Scale



First Floor



Second Floor

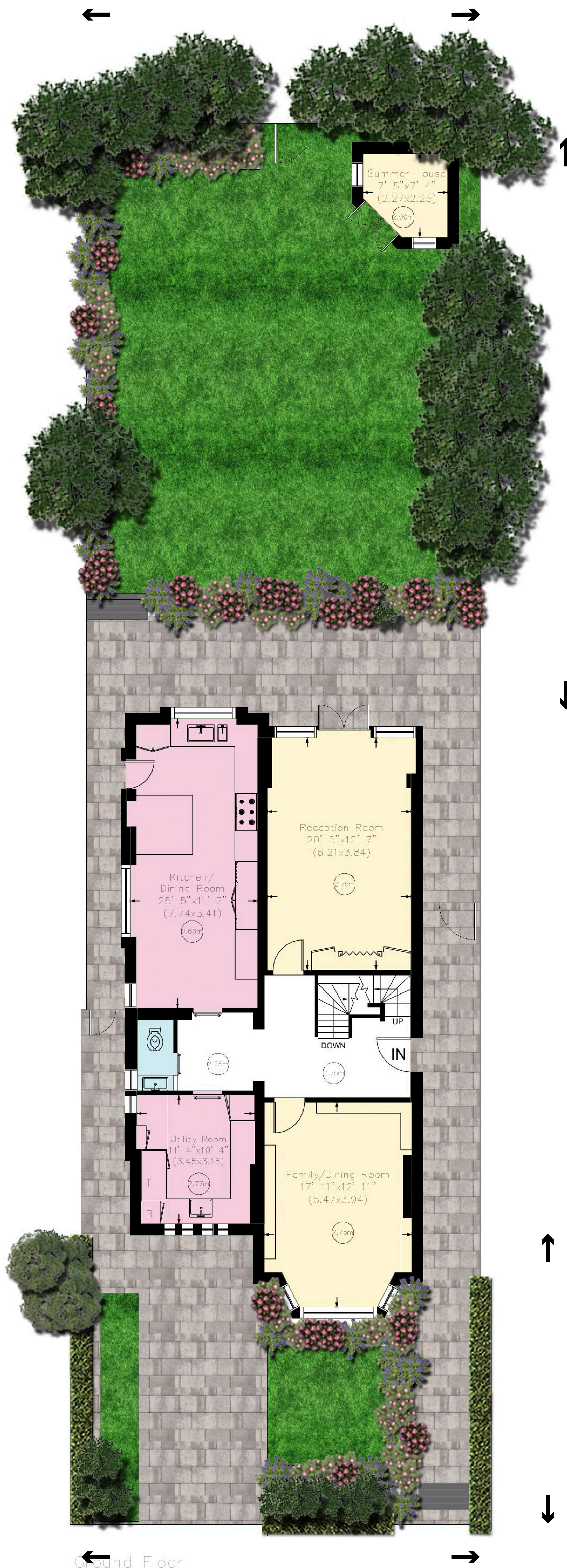
www.WilliamSalisbury.Photography

Not to Scale, for guidance only and must not be relied upon as a statement to fact. All measurements areas are approximate only (and have been prepared in accordance with the current edition of the RICS Code of Measuring Practice).

Rotherwick Road NW11

Acre 0.098 (approx.)

For identification only, Not to Scale



Garden
Approximately
51' 9" x 34' 6"
(15.77 x 10.52)

Drive
Approximately
35' 0" x 25' 5"
(10.66 x 7.74)

www.WilliamSalisbury.Photography

Not to Scale, for guidance only and must not be relied upon as a statement to fact. All measurements areas are approximate only (and have been prepared in accordance with the current edition of the RICS Code of Measuring Practice).