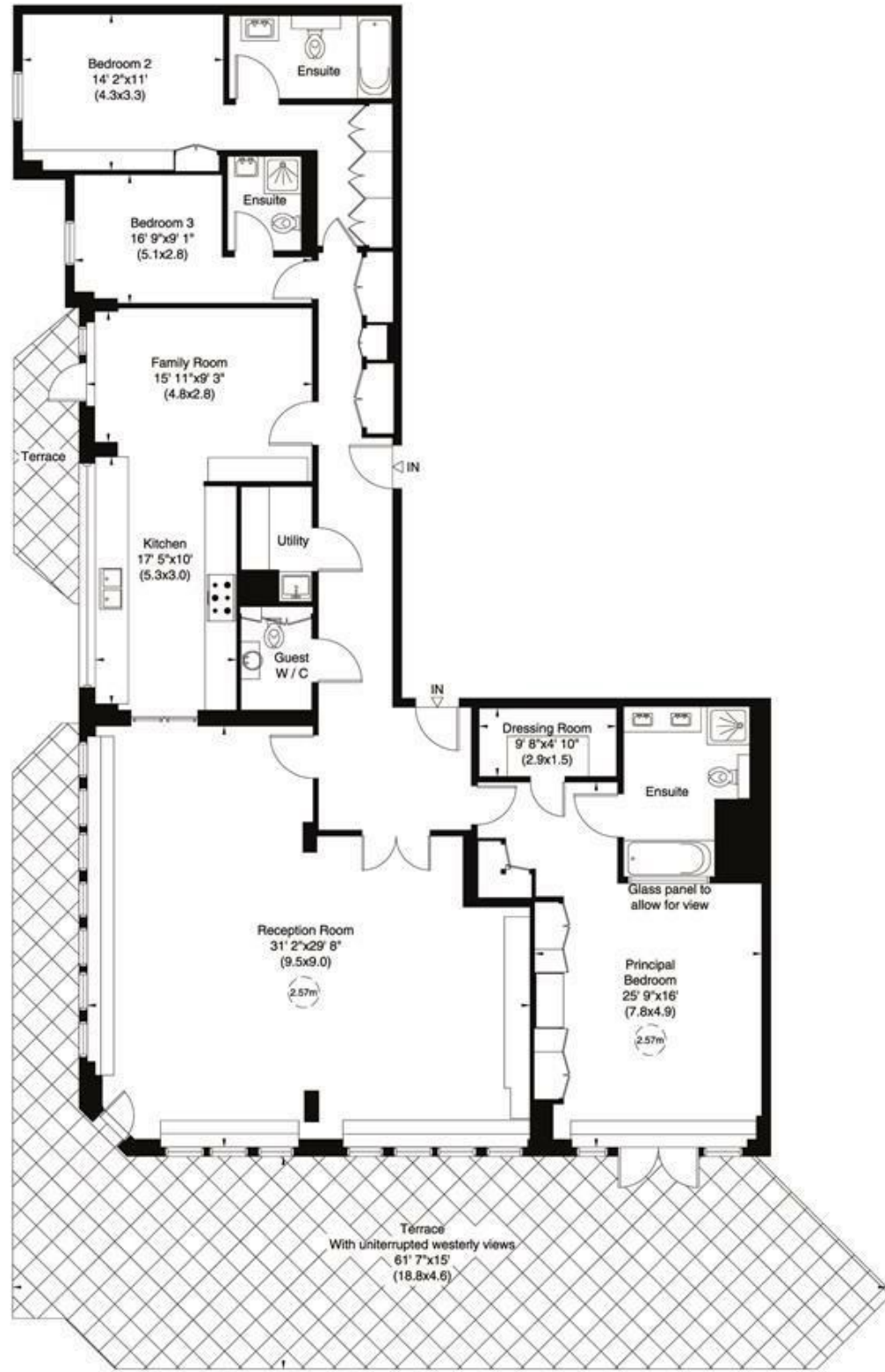


# West Heath Place, NW11

Gross internal area (approx.)  
2542 Sq ft (236 Sq m)

For identification only, Not to Scale

capital 020 8671 7722



Fourth Floor

Not to scale, for guidance only and must not be relied upon as a statement of fact. All measurements and areas are approximate only (and have been prepared in accordance with the current edition of the RICS Code of Measuring Practice).



[newhomes@glentree.com](mailto:newhomes@glentree.com)

020 8731 9500

[www.glentree.com](http://www.glentree.com)



## West Heath Place, 1B Hodford Road, NW11

A stunning and contemporary 3 bedroom, 3 bathroom penthouse apartment situated in this established block on the corner of The Finchley Road & Hodford Road. West Heath Place offers luxury living with its 24 hr concierge & security, underground parking, lift to all floors, well manicured communal gardens, hotel style lobby & resident's gym. The development is situated close to Golders Green Tube Station and to the beautiful shopping centres of Hampstead & Temple Fortune.

The apartment spans over 2500 sq ft and offers a fabulous wrap around terrace of approximately 1000 sq ft with uninterrupted views. The accommodation comprises 30' x 30' reception room, large kitchen/dining/family room, utility room, guest cloakroom, beautifully appointed master bedroom with dressing room & en-suite bathroom, two further bedrooms (both with en-suite), underfloor heating, comfort cooling, two underground parking spaces & a storage room.

Internal viewing is highly recommended

THREE BEDROOMS; THREE BATHROOMS (ALL EN-SUITE); 30' RECEPTION ROOM; LARGE KITCHEN/DINING/FAMILY ROOM; UTILITY ROOM; GUEST CLOAKROOM; 1000 SQ FT WRAP AROUND TERRACE; TWO UNDERGROUND PARKING SPACES; STORAGE ROOM; 24 HOUR CONCIERGE/SECURITY

**SOLE AGENT**

**Offers in excess of £3,000,000**



NEW HOMES 020 8731 9500  
FAX 020 8209 0307

E [newhomes@glentree.com](mailto:newhomes@glentree.com)  
W [www.glentree.com](http://www.glentree.com)

Glentree Estates Ltd  
698 Finchley Road  
London NW11 7NE

