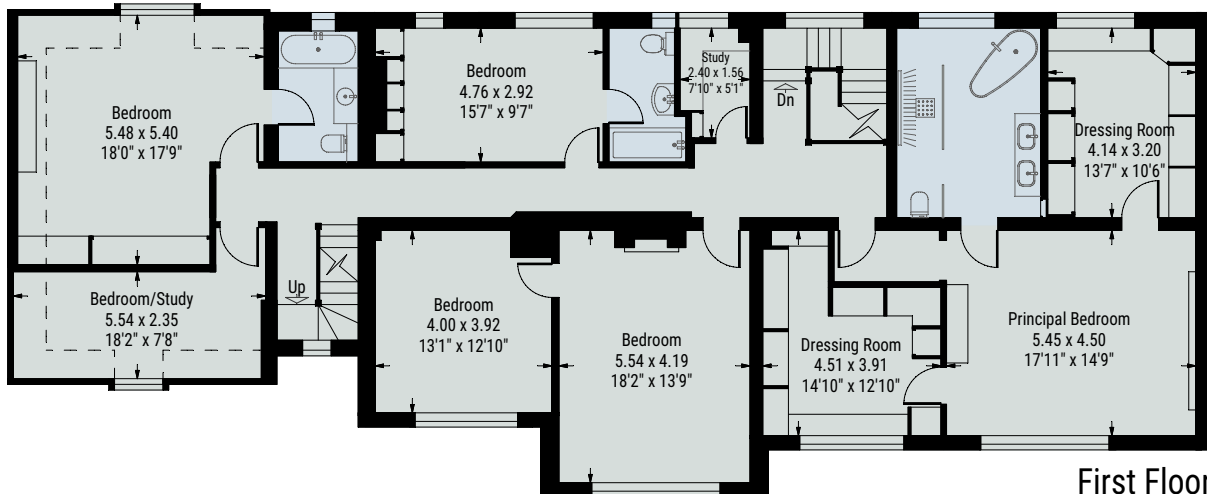
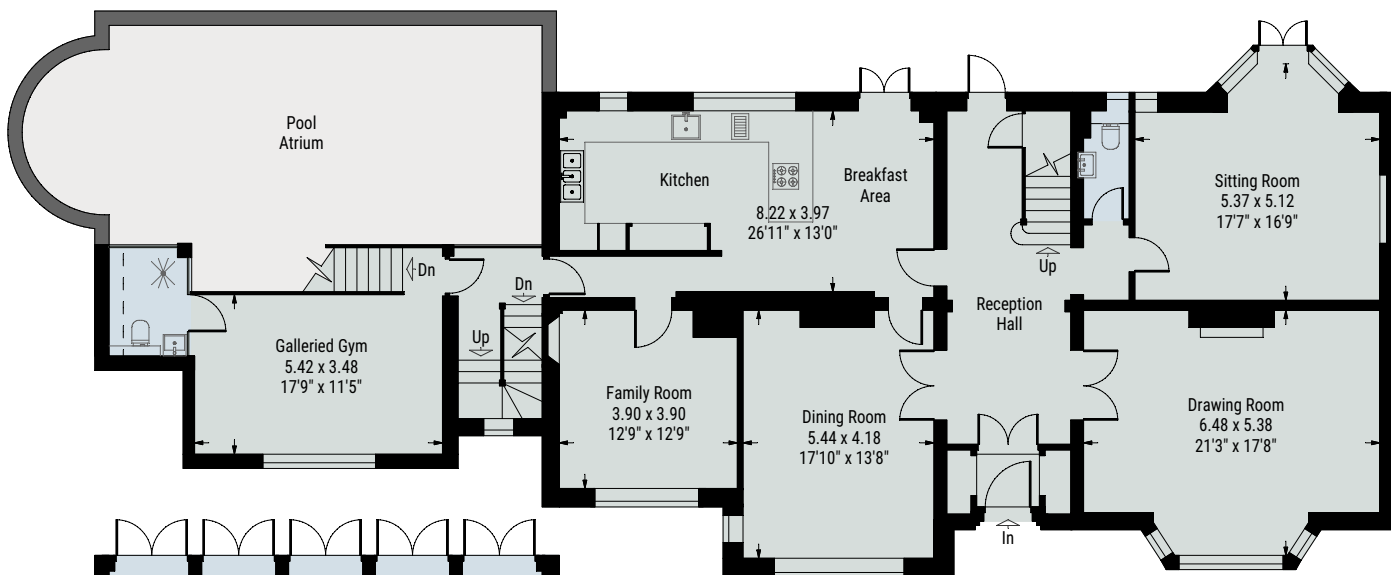


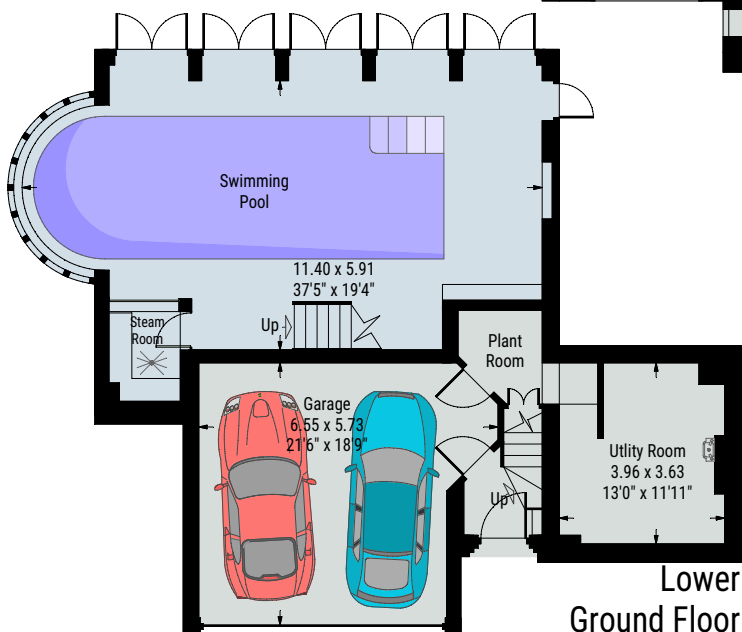
Second Floor



First Floor

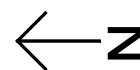


Ground Floor



Lower Ground Floor

Spaniards Close,  
London NW11



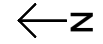
Approximate Gross Internal Area:  
708.7 sq.m. / 7628 sq.ft.  
(Including reduced height area below 1.5m:  
61.5 sq.m. / 662 sq.ft.)  
(Excluding pool atrium:  
55.5 sq.m. / 597 sq.ft.)

[www.ProplanUK.co.uk](http://www.ProplanUK.co.uk)

This plan is for guidance only and must not be relied upon as a statement of fact.

# Spaniards Close, London NW11

Approximate Site Area:  
1850 sq.m. (0.46 acres)



[www.ProplanUK.co.uk](http://www.ProplanUK.co.uk)

This plan is for guidance only and must not be relied upon as a statement of fact.