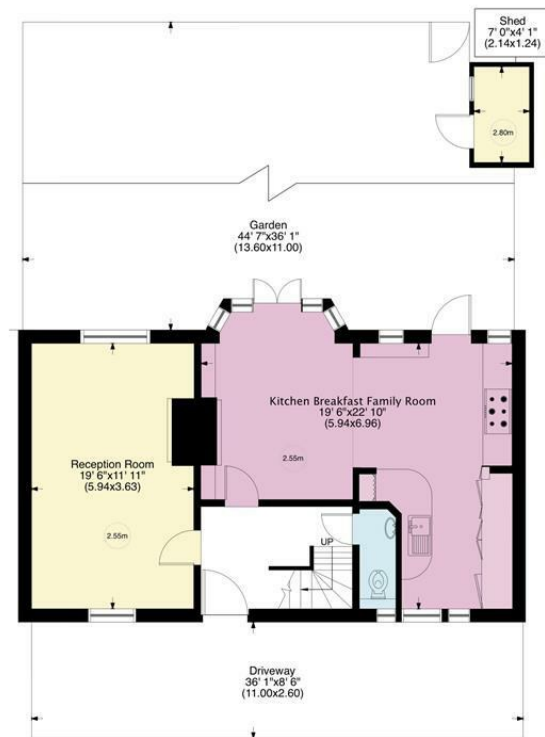
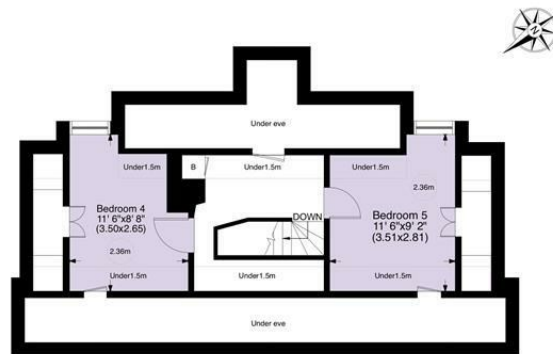


## Hampstead Way NW11

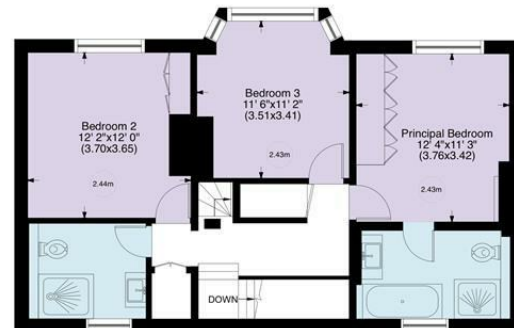
Gross internal area (approx.)  
187 Sq m (2011 Sq ft) Including Shed, under eaves and under 1.5m  
154 Sq m (1657 Sq ft) Excluding Shed, under eaves and under 1.5m  
For identification only, Not to Scale



Ground Floor



Second Floor



First Floor

[www.WilliamSalisbury.Photography](http://www.WilliamSalisbury.Photography)

Not to Scale, for guidance only and must not be relied upon as a statement to fact. All measurements areas are approximate only (and have been prepared in accordance with the current edition of the RICS Code of Measuring Practice).



## Hampstead Way, NW11

Arranged over three floors, is this beautifully refurbished, Grade II Listed family home located in this picturesque and quiet square off Hampstead Way.

This fine terraced home offers 5 bedrooms and 2 bathrooms. The ground floor comprises a guest w.c, a kitchen breakfast family room and a separate reception room.

The first floor offers a principal bedroom with an ensuite bathroom, utility cupboard, 2 further double bedrooms and a separate family bathroom. Bedrooms 4 and 5 occupy the second floor and there is a manicured southeast facing rear garden

The property further benefits from an allocated off street parking space. The local amenities of Temple Fortune and the open spaces of the Heath Extension are within a short walk away.

RECEPTION ROOM: KITCHEN/BREAKFAST ROOM: PRINCIPAL BEDROOM WITH EN SUITE: 4 FURTHER BEDROOMS: 2 BATHROOM: GUEST WC: REAR GARDEN

**SOLE AGENT** **£1,750,000**

