

Stormont Road, N6

Gross internal area (approx.)

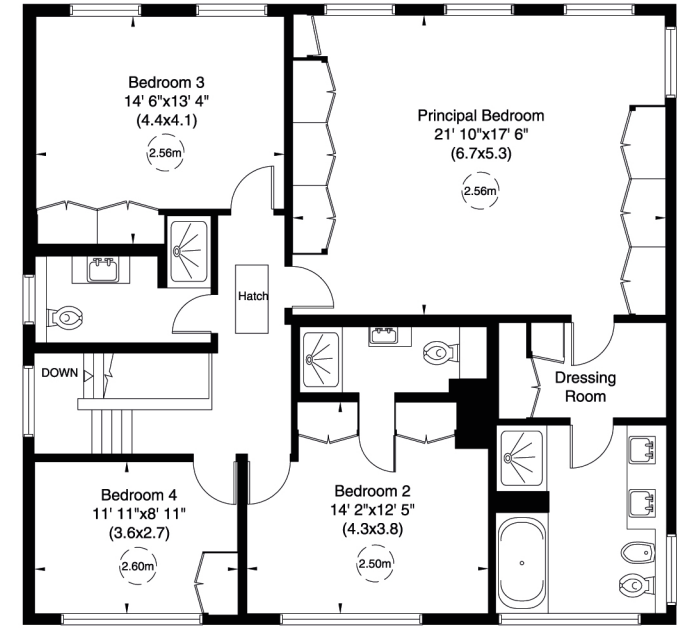
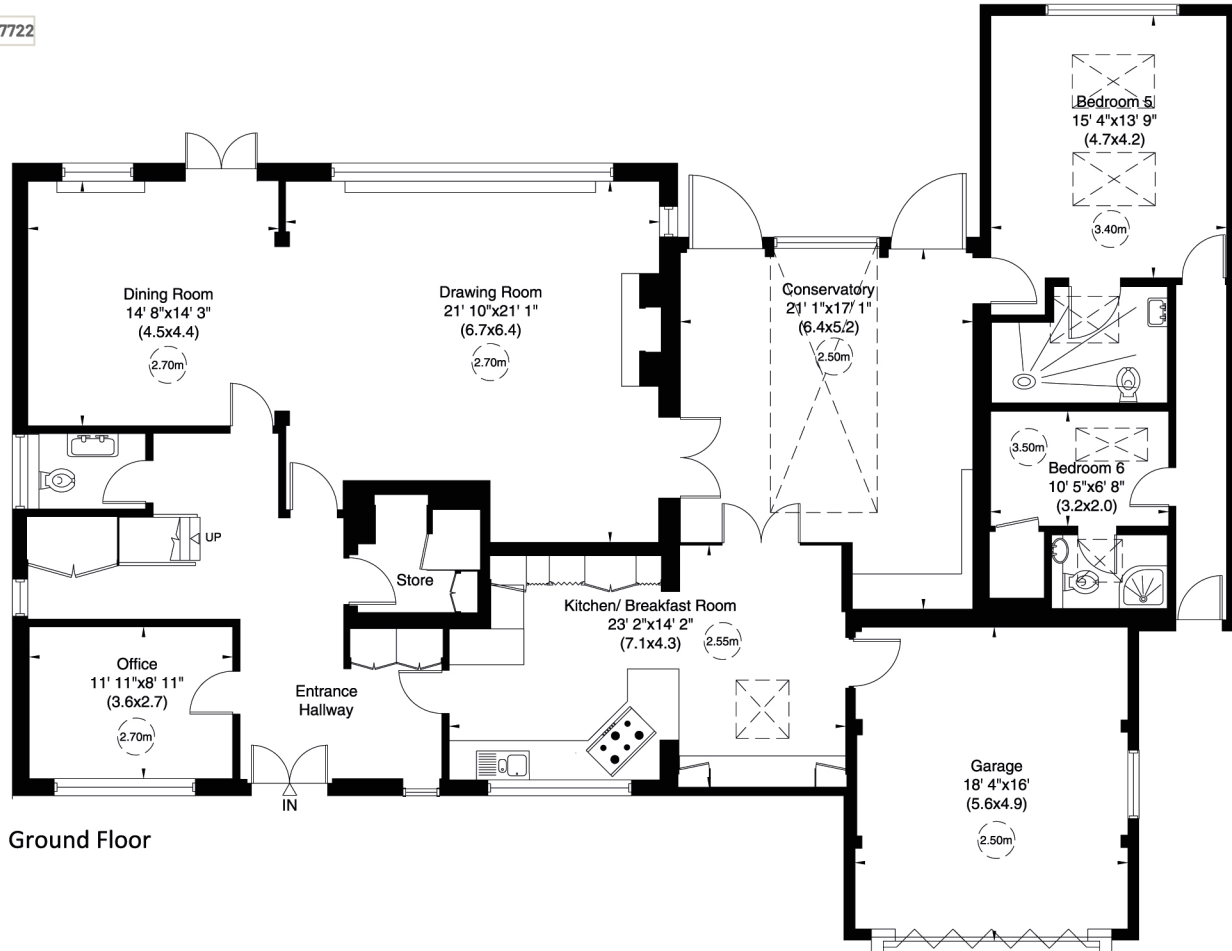
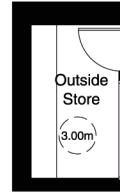
3943 Sq ft (366 Sq m) Including Outside Store

3897 Sq ft (362 Sq m) (Excluding Outside Store)

For identification only, Not to Scale



capital 020 8671 7722



Not to scale, for guidance only and must not be relied upon as a statement of fact. All measurements and areas are approximate only (and have been prepared in accordance with the current edition of the RICS Code of Measuring Practice).

Stormont Road, N6

Site Plan (approx.)
0.44460514 Acre (approx.)
For identification only, Not to Scale



capital_020_88717722

