

Winnington Road, Hampstead, London N2

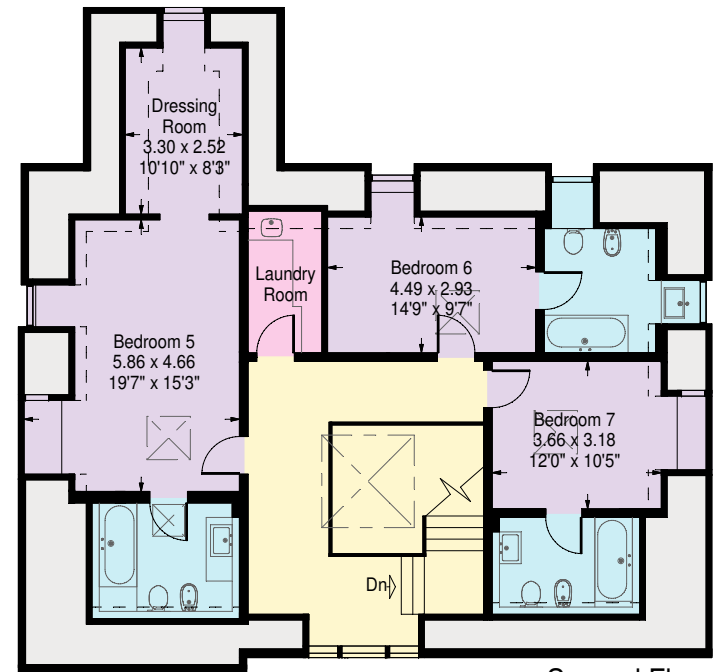
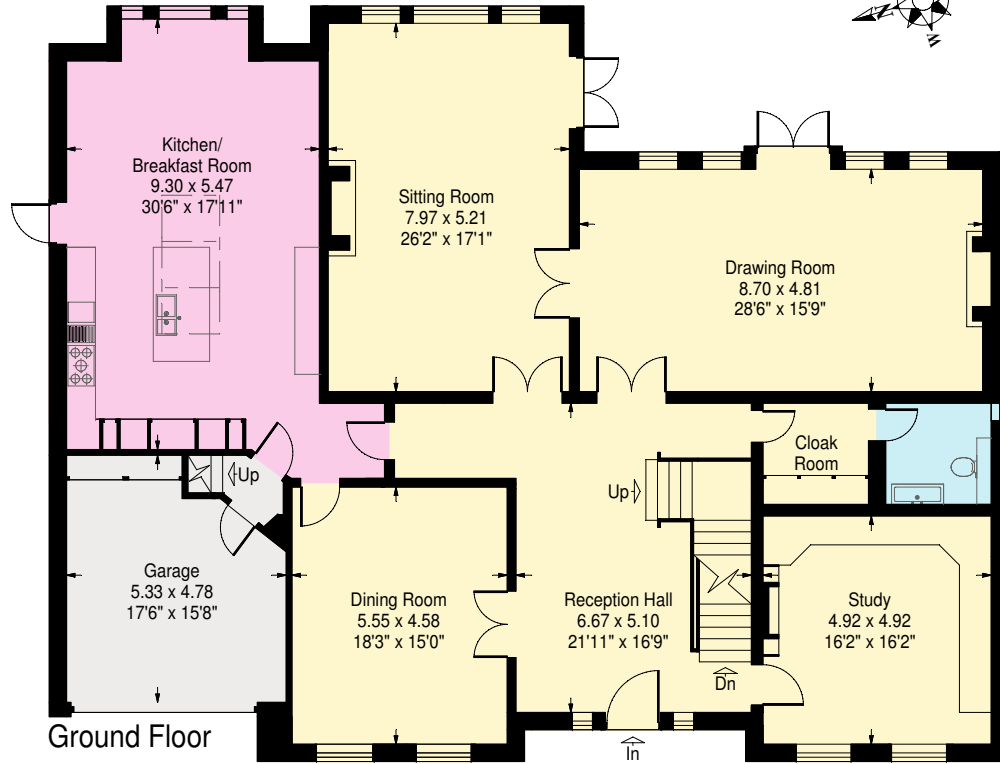
Approximate Gross Internal Floor Area:

1006.4 sq.m / 10833 sq.ft.

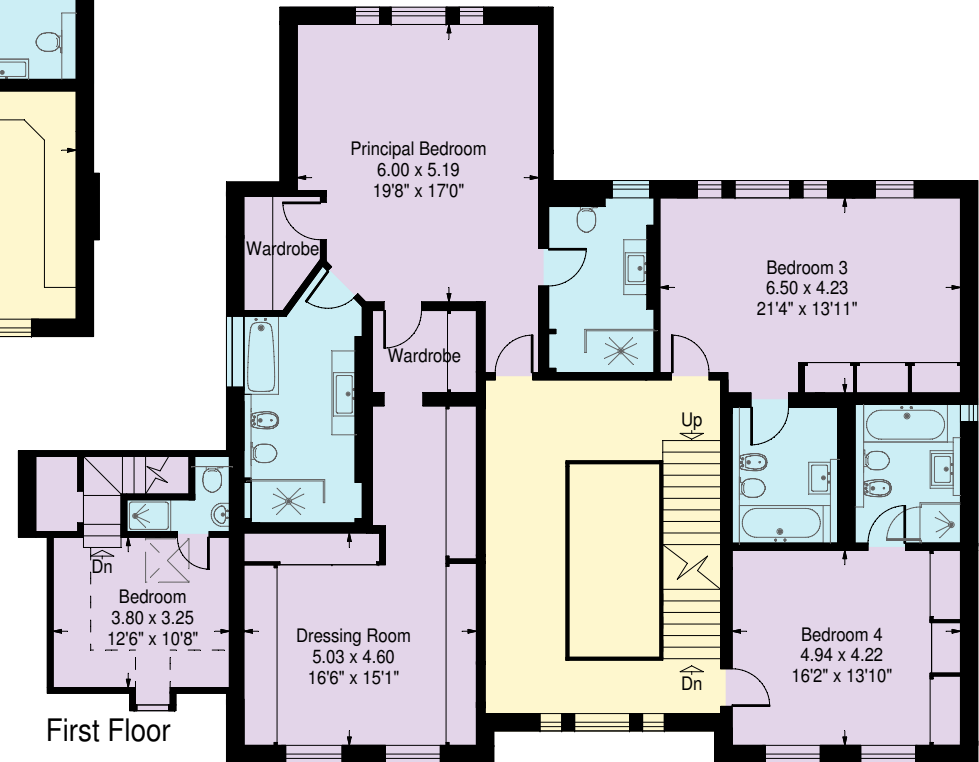
(Including lower basement. Not including reduced height area,

below 1.5m - 57.0 sq.m / 614 sq.ft.)

Total - 1063.4 sq.m / 11446 sq.ft.



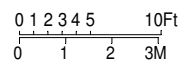
Second Floor



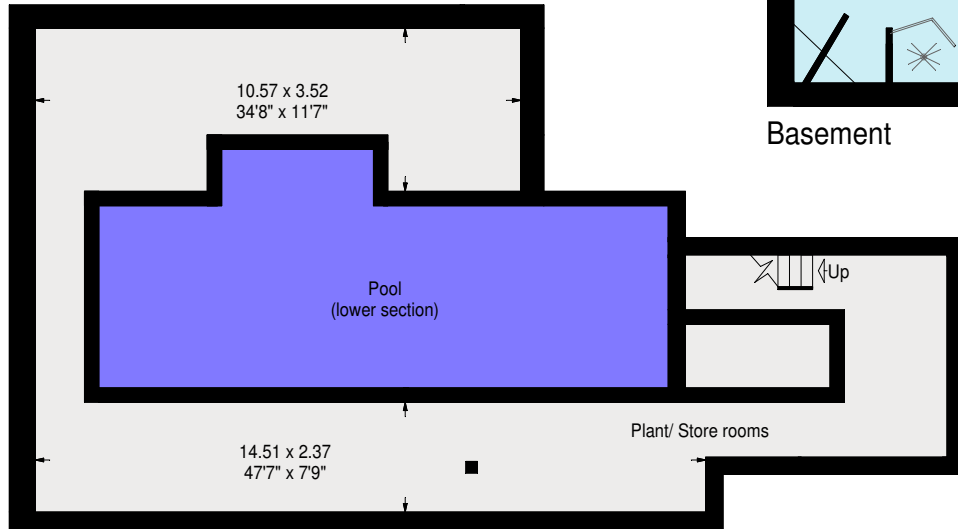
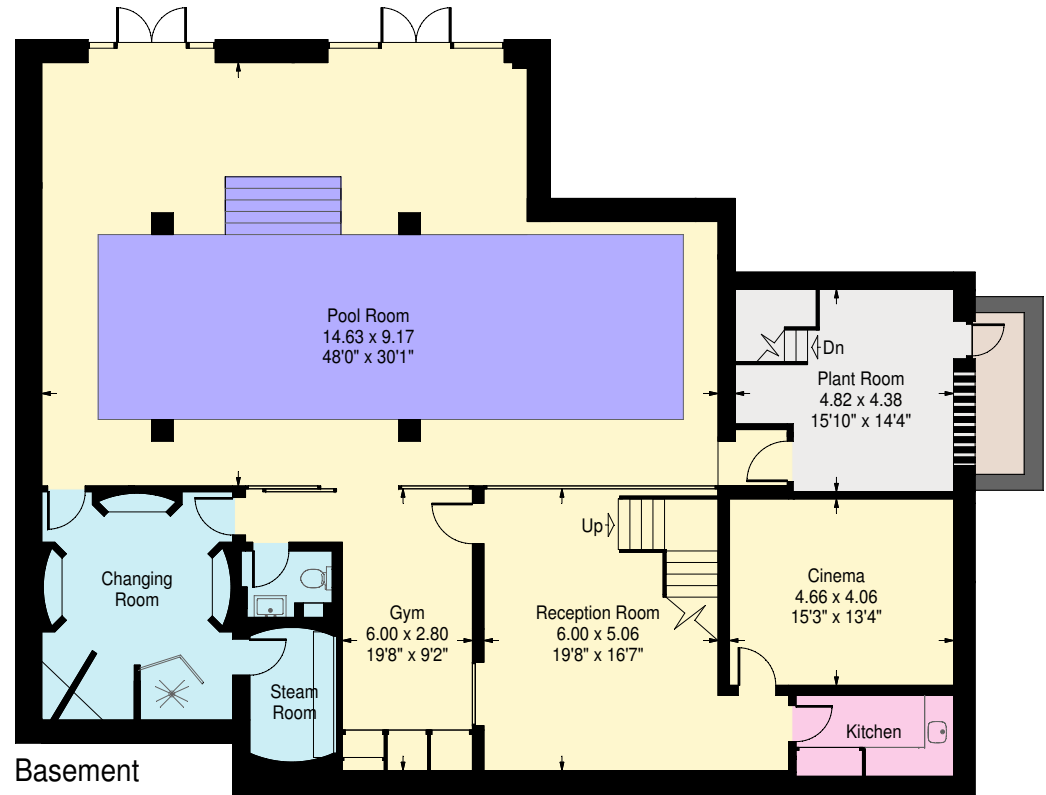
www.ProplanUK.co.uk

This plan is for guidance only and must not be relied upon as a statement of fact.

APPROX. SCALE



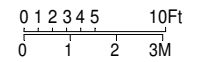
Winnington Road, Hampstead, London N2



www.ProplanUK.co.uk

This plan is for guidance only and must not be relied upon as a statement of fact.

APPROX. SCALE



Winnington Road, Hampstead, London N2



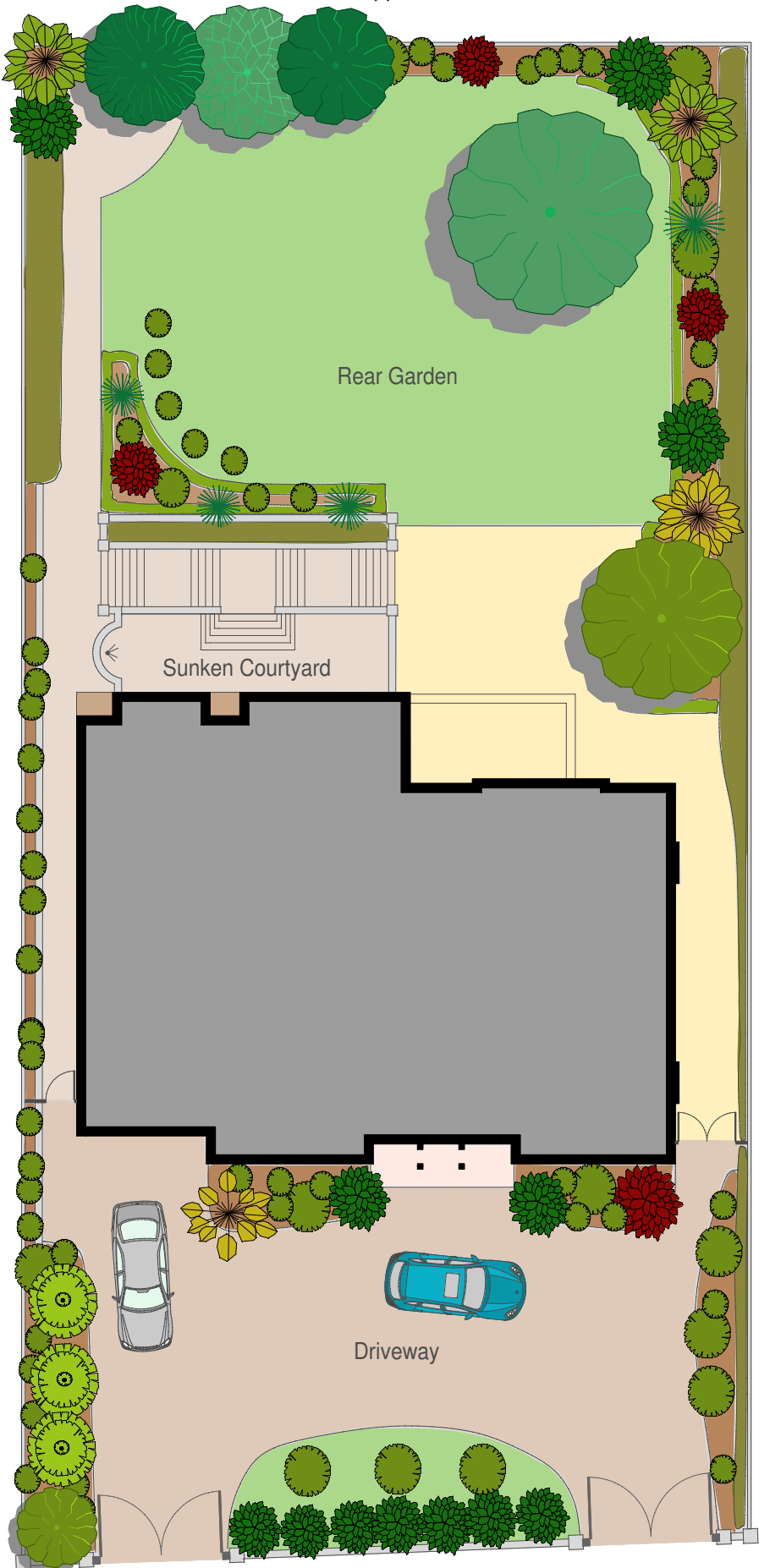
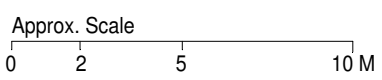
25.0 m (82 ft)
Approx.

52.2 m
(171 ft)
Approx.

14.3 m
(47 ft)
Approx.

25.6 m
(84 ft)
Approx.

25.0 m (82 ft)
Approx.



www.ProplanUK.co.uk

All measurements and figures are taken in accordance with RICS guidelines. This plan is for guidance only and must not be relied upon as a statement of fact.