

NEVILLE DRIVE
LONDON N2

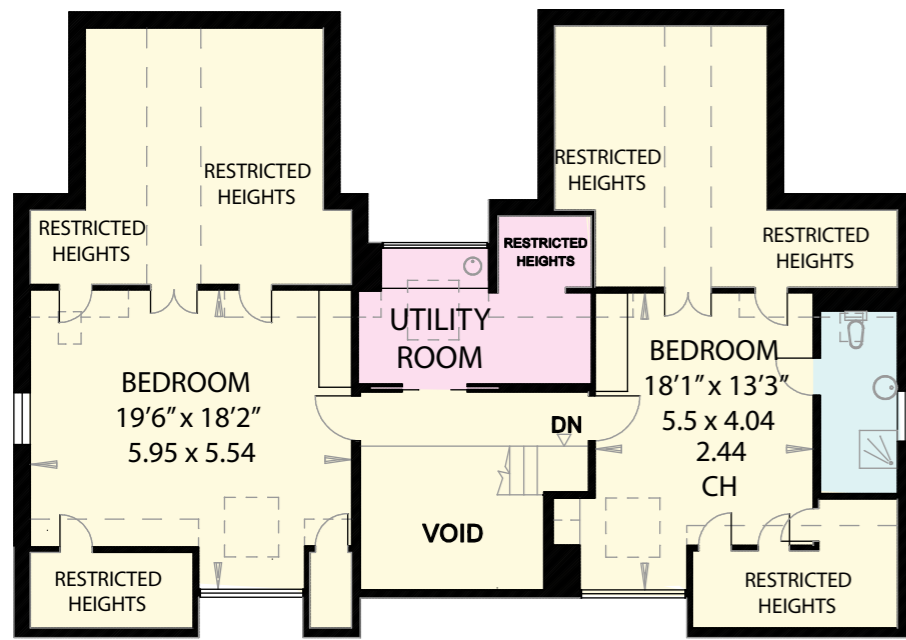
Gross Internal Area = 457 sq metres/ 4920 sq feet

(Excluding Proposed Basement, Restricted Heights & Voids)

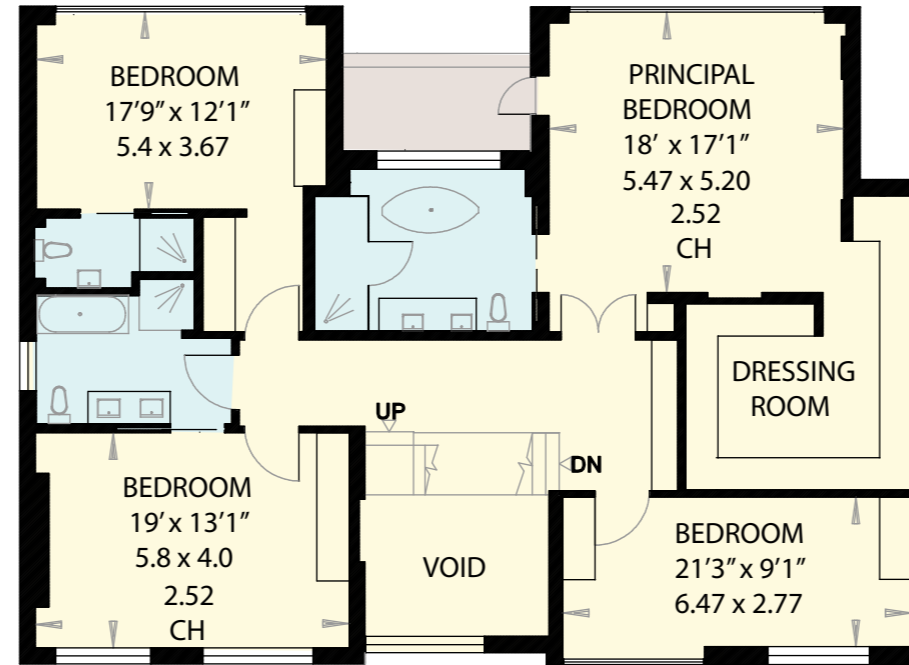
Restricted Heights = 54.4 sq metres/ 586 sq feet

Proposed Basement = 403.4 sq metres/ 4343 sq feet

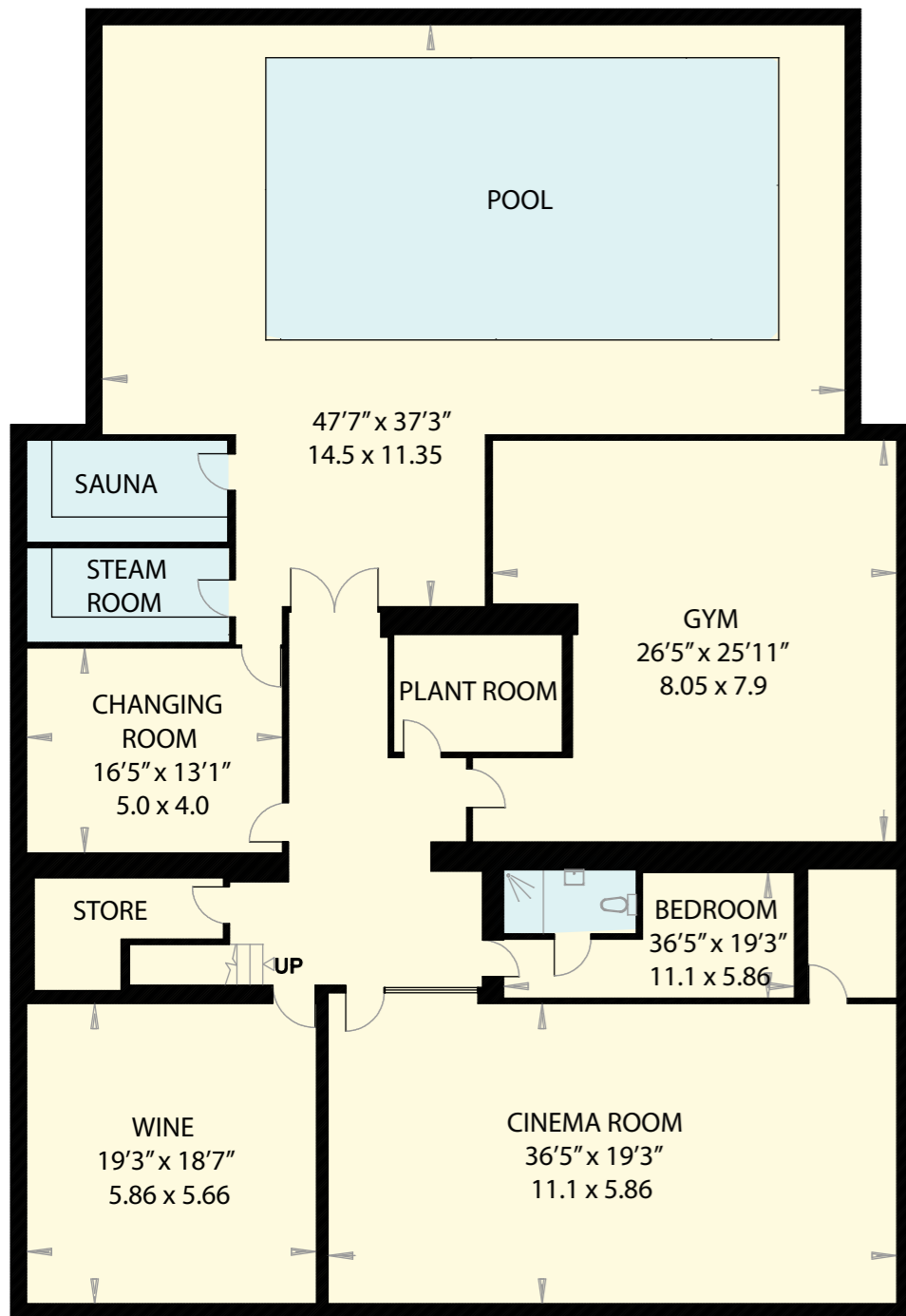
Total = 915 sq metres/ 9849 sq feet



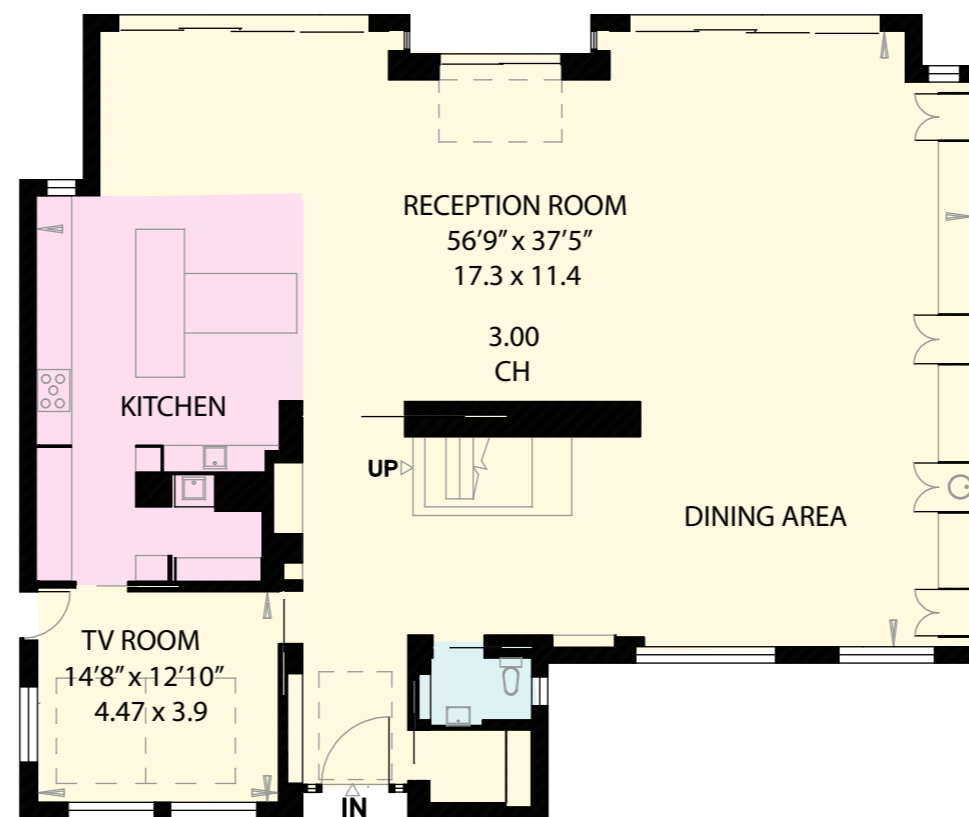
SECOND FLOOR



FIRST FLOOR



BASEMENT



GROUND FLOOR

SITE = 0.22 ACRES

