

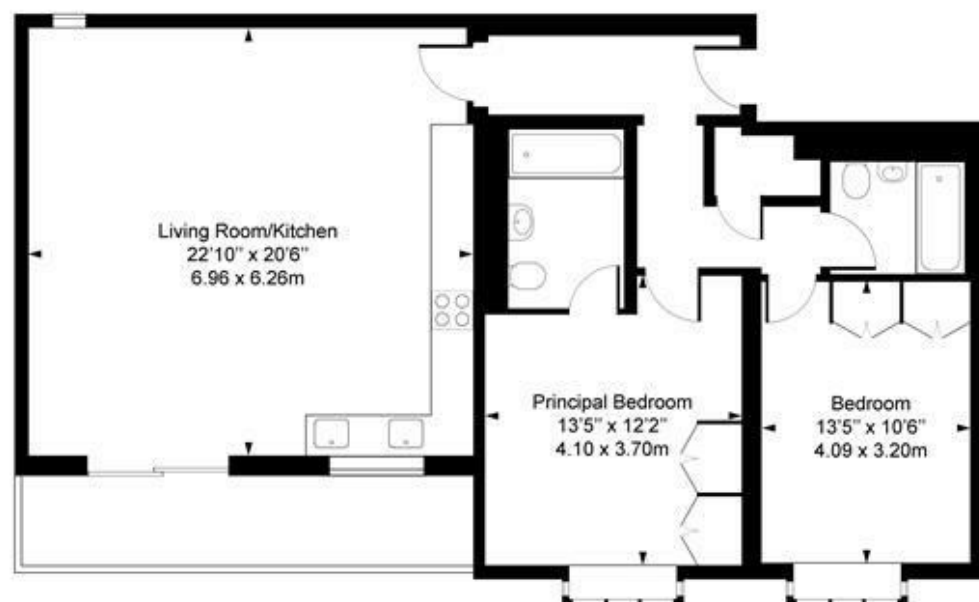


glentree  
RENTALS

020 8209 1144  
www.glentree.com

## Beechcroft Avenue, NW11

Approx. Gross Internal Area 914.93 sq ft / 85 sq m



First Floor

For Illustration Purposes Only - Not To Scale

This floor plan should be used as a general outline for guidance only and does not constitute in whole or in part an offer or contract. Any intending purchaser or lessee should satisfy themselves by inspection, search, enquiries and full survey as to the correctness of each statement. Any areas, measurements or distances quoted are approximate and should not be used to value a property or be the basis of any sale or let.



## Beechcroft Avenue, Golders Green NW11

Located just minutes from Golders Green Station both Golders Green & Temple Fortune High streets and plenty of local schools and places of worship, Oakview Lodge offers a selection of stunning brand newly fully refurbished apartments to rent.

This 914 sq ft 1st floor apartment offers 2 double bedrooms, 2 bathrooms (both ensuite), a very large open plan living room and Kosher kitchen along with direct access to a private balcony.

This apartment comes with an allocated one space in the secure car park and access to the communal gardens.

Available April 2025  
Long Let  
Barnet Council Band E  
Deposit 5 weeks Rent  
EPC rating B

Furnished options available, to be discussed

**£695 Per Week**



RENTALS 020 8209 1144 E rentals@glentree.com  
SALES 020 8458 7311 E sales@glentree.com  
FAX 020 8209 0307 W www.glentree.com

Glentree Estates Ltd  
698 Finchley Road  
London NW11 7NE



Energy Efficiency Rating		Current	Potential	Environmental Impact (CO <sub>2</sub> ) Rating		Current	Potential
Very energy efficient - lower running costs				Very environmentally friendly - lower CO <sub>2</sub> emissions			
(92 plus) A				(92 plus) A			
(81-91) B				(81-91) B			
(69-80) C				(69-80) C			
(55-68) D				(55-68) D			
(39-54) E				(39-54) E			
(21-38) F				(21-38) F			
(1-20) G				(1-20) G			
Not energy efficient - higher running costs				Not environmentally friendly - higher CO <sub>2</sub> emissions			
<b>England &amp; Wales</b>		EU Directive 2002/91/EC	85	<b>England &amp; Wales</b>	EU Directive 2002/91/EC	85	

